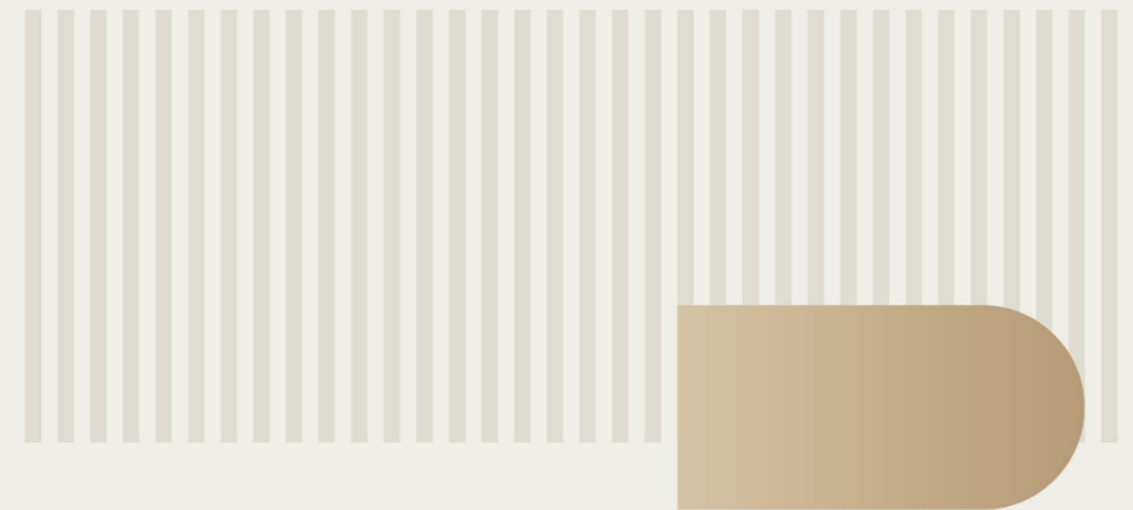


CABINETS, WALLS & DOORS
MEET INTERNATIONAL MARKET QUALITY STANDARDS
APPROVED BY OVER 80 DIFFERENT COUNTRIES



DOORS & WALLS SYSTEM

THE PERFECT FIT FOR A LUXURIOUS HOME

Luxury Cabinets and Wardrobes Company Limited specializes in creating high-quality, custom cabinets and wardrobes that combine elegance with functionality. Download our product manual to explore our offerings.

CONTENTS

At Luxfit, we are committed to delivering the finest craftsmanship and unparalleled quality through our diverse door collections, including interior doors, entry doors, and garage doors. Each door is meticulously designed to complement your home's unique style while offering superior functionality and durability.

Our doors not only enhance the aesthetic appeal of your home but also offer security, energy efficiency, and ease of use. Whether you're looking for elegant interior doors to seamlessly connect your living spaces, a secure and stylish entry door to make a grand first impression, or a durable garage door for ultimate protection, we have the perfect solution.

Paired with our full home customization services, you'll enjoy a harmonious blend of design and practicality, creating spaces that reflect your personality and meet your lifestyle needs. With a commitment to excellence, we ensure every product brings the best service and top-tier quality to your home.



Interior Door

Y-PM Series-Ecological door

T-PM-G Series-Ecological door (Project)

P-PM-G Series-Ecological door (Project)

L-PM Series-Painted ecological door

L-ZM Series-Painted ecological door with shape

LM-PM Series-Aluminum Ecological door

YX-PM Series-Eco-invisible door/Aluminum wood invisible door

WPC-M-L-G Series-Lacquer Engraved Line Door/Lacquer Decorative Line Door (Project)

WPC-M-PVC-G Series-Laminating Engraved Line Door/Laminating Decorative Line Door/Laminating Glass Door (Project)

Functional Door

Wall Panel

RFM Series-Entry Door

P-Series-The Same Color Wall Panel

WYM Series-Bathroom Door

CKM Series-Garage Door

Y-PM SERIES

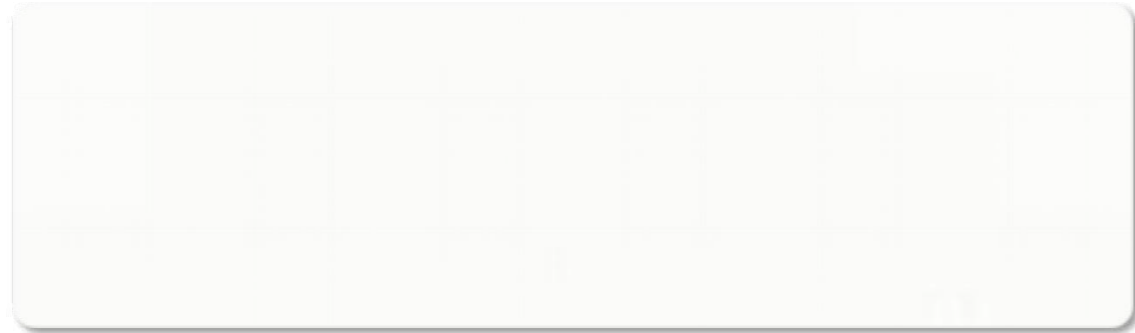
ECOLOGICAL DOOR



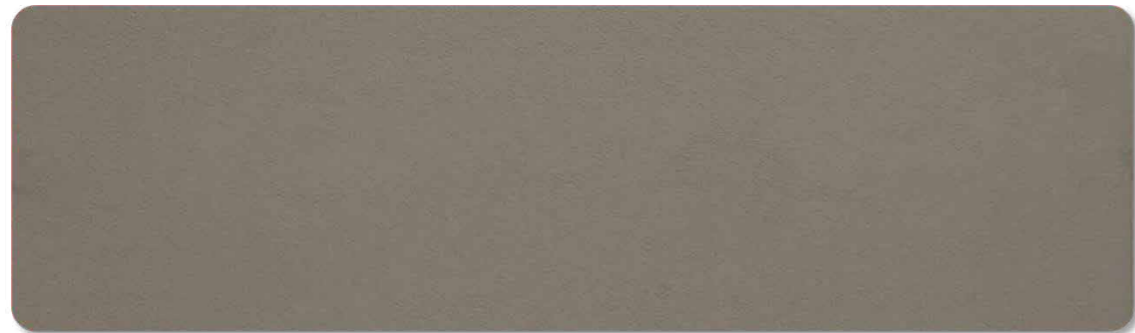
Y-PM SERIES-ECOLOGICAL DOOR COLOR OPTION (only flat panel, without shape)



Color: Y-115



Color: Y-118



Color: Y-122



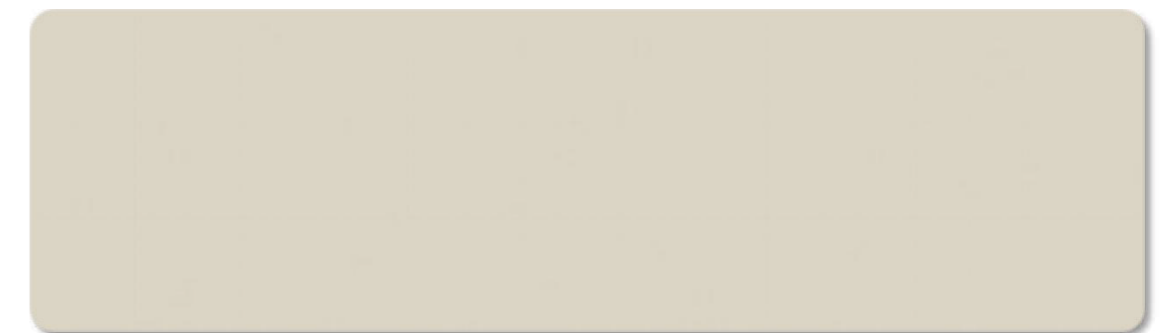
Color: Y-125



Color: Y-126



Color: Y-127



Color: Y-130



Color: Y-503

Door fan size: height 2100mm * width 900mm, door thickness 43mm. **(need other colors in the company's system can only do high-end customization)**

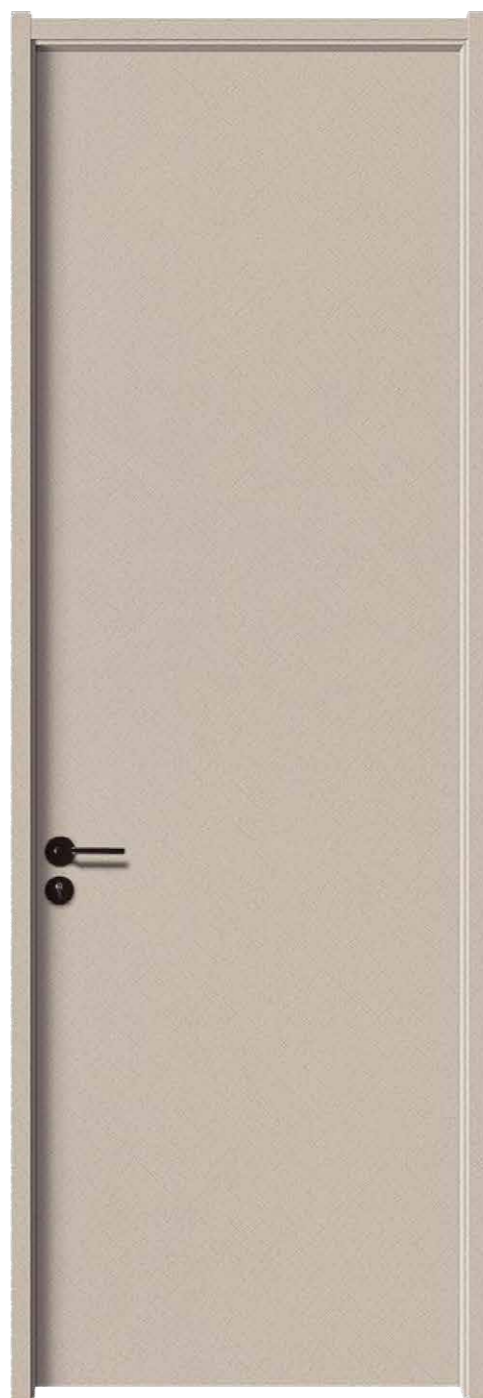
T-PM-G-1 SERIES

ECOLOGICAL DOOR (PROJECT)



T-PM-G-1 SERIES

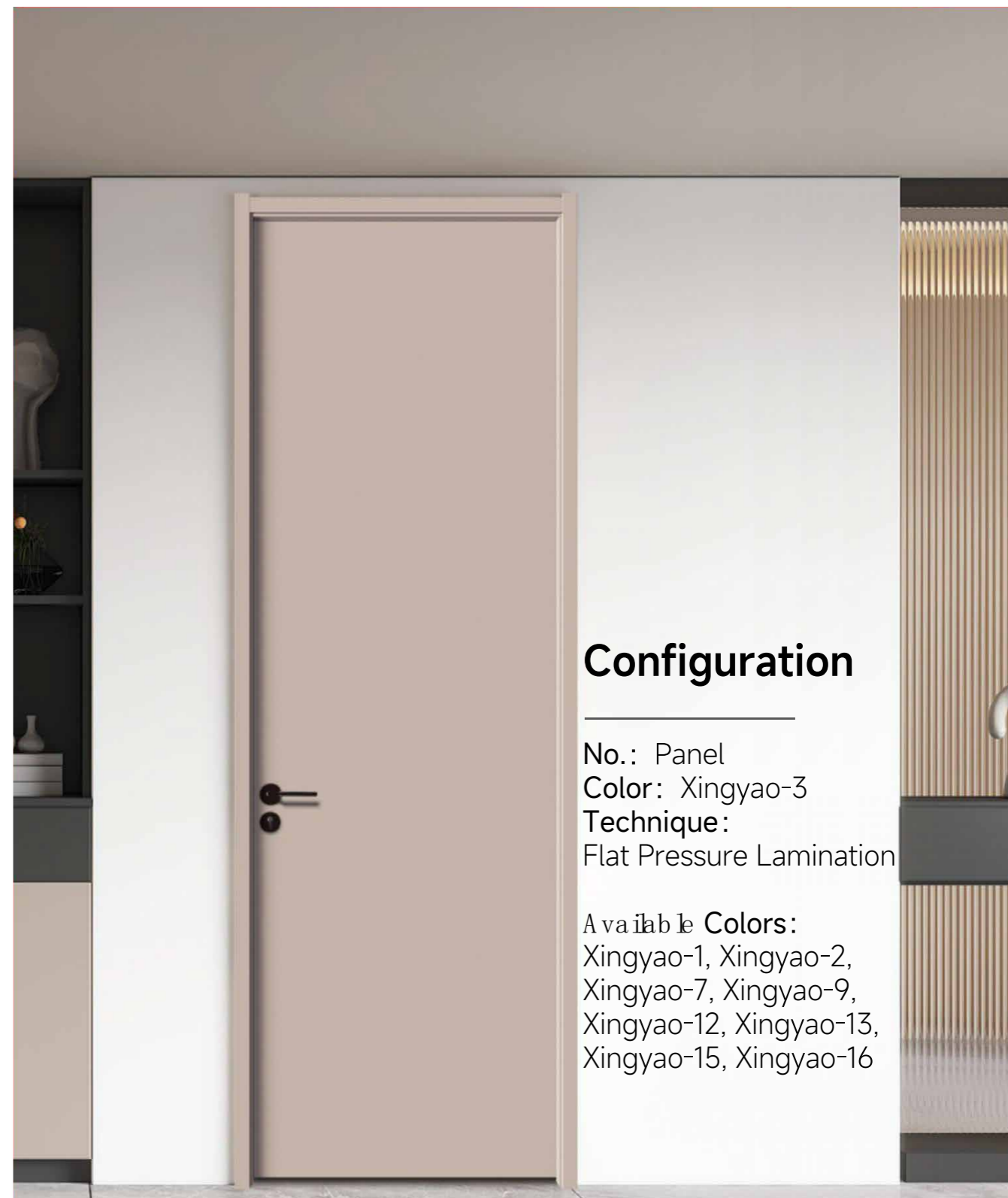
ECOLOGICAL DOOR (PROJECT)



Configuration

No.: Panel
Color: Xingyao-7
Technique: Flat Pressure Lamination

Available Colors: Xingyao-1, Xingyao-2, Xingyao-3, Xingyao-9, Xingyao-12, Xingyao-13, Xingyao-15, Xingyao-16



Configuration

No.: Panel
Color: Xingyao-3
Technique:
Flat Pressure Lamination

Available Colors:
Xingyao-1, Xingyao-2,
Xingyao-7, Xingyao-9,
Xingyao-12, Xingyao-13,
Xingyao-15, Xingyao-16

T-PM-G-1 SERIES

ECOLOGICAL DOOR (PROJECT)



Configuration

No.: XY-018

Color: Xingyao-13

Technique: Special models and colors

Available Colors: Xingyao-12



Configuration

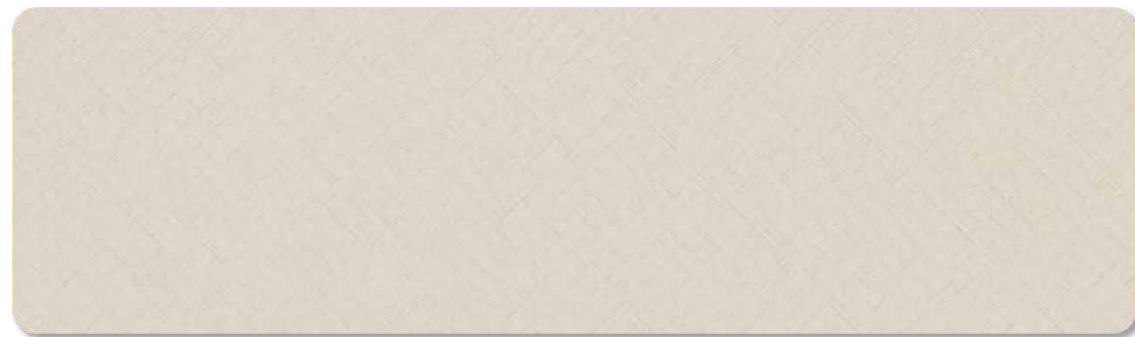
No.: XY-016

Color: Xingyao-13

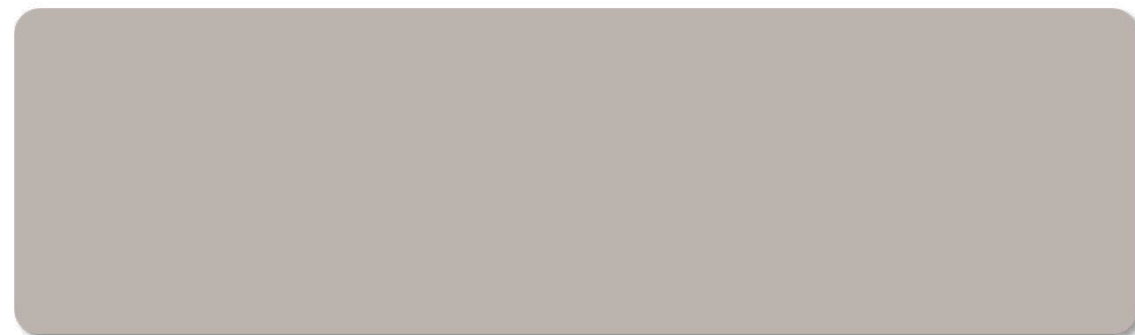
Technique: Special models and colors

Available Colors: Xingyao-19,
Xingyao-12

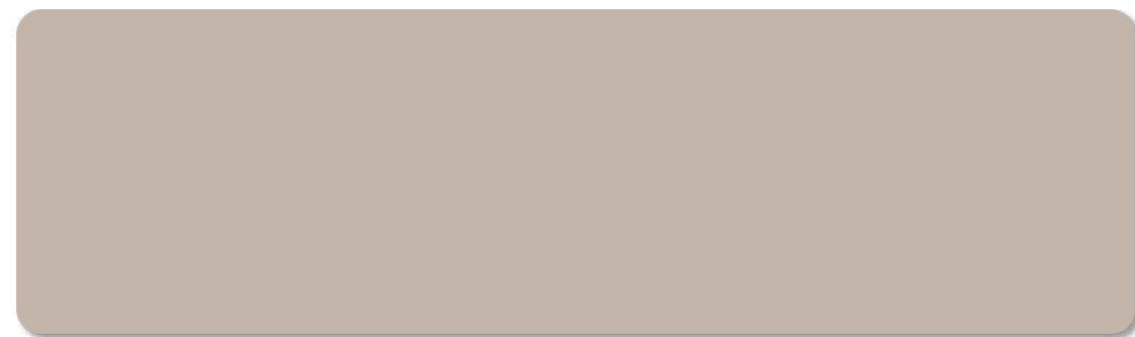
T-PM-G-1 SERIES-ECOLOGICAL DOOR (PROJECT) COLOR OPTION



Color: Xingyao-1



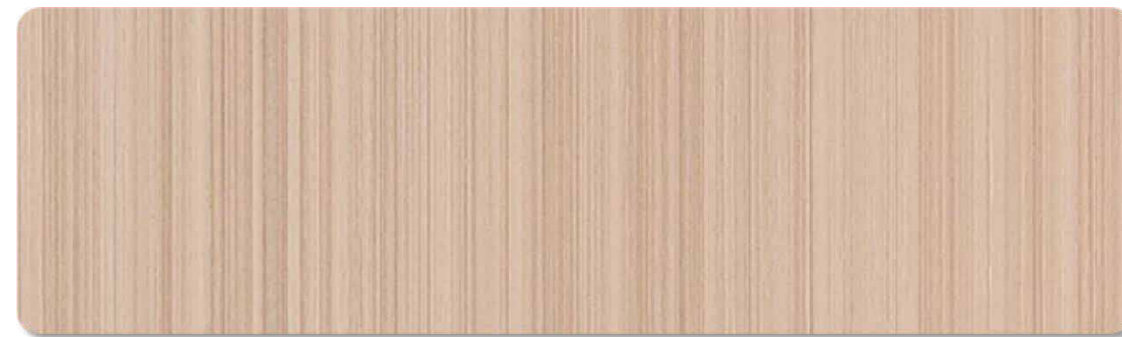
Color: Xingyao-2



Color: Xingyao-3



Color: Xingyao-7



Color: Xingyao-9



Color: Xingyao-12



Color: Xingyao-13



Color: Xingyao-16

Door fan size: height 2100mm * width 900mm, door thickness 43mm. series with "G" for the project style.

T-PM-G-2 SERIES

ECOLOGICAL DOOR (PROJECT)



Configuration

Serial Number: TA917-863
Color: Noah-863
Material: Space blue
Dimension: 2250H 920W

Available Colors:
Noah-862



Serial Number: TA919-863
Color: Noah-863
Material: Space blue
Dimension: 2250H 920W

Available Colors:
Noah-862

T-PM-G-2 SERIES

ECOLOGICAL DOOR (PROJECT)



Configuration

No.: TA921-865
Color: Elmwood-865
Material: Space blue
Dimension: 2250H 920W



No.: T1011-862
Color: Noah-862
Material: Space blue
Dimension: 2440H 920W

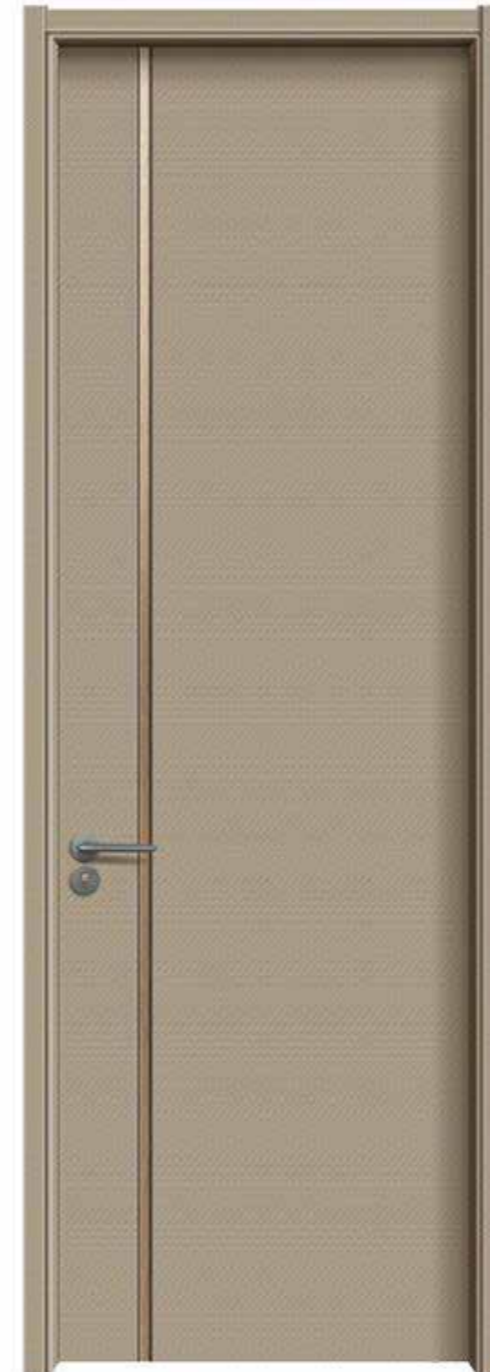


Configuration

No.: T1011-863
Color: Noah-863
Material: Space blue
Dimension: 2440H 920W

T-PM-G-2 SERIES

ECOLOGICAL DOOR (PROJECT)



Configuration

No.: TA925-860
Color: Walnut-860
Material: Space blue
Dimension: 2250H 920W

Available colors:
Walnut-861

No.: TA925-861
Color: Walnut-861
Material: Space blue
Dimension: 2250H 920W

Available colors:
Walnut-860

No.: TA925-862
Color: Noah-862
Material: Space blue
Dimension: 2250H 920W

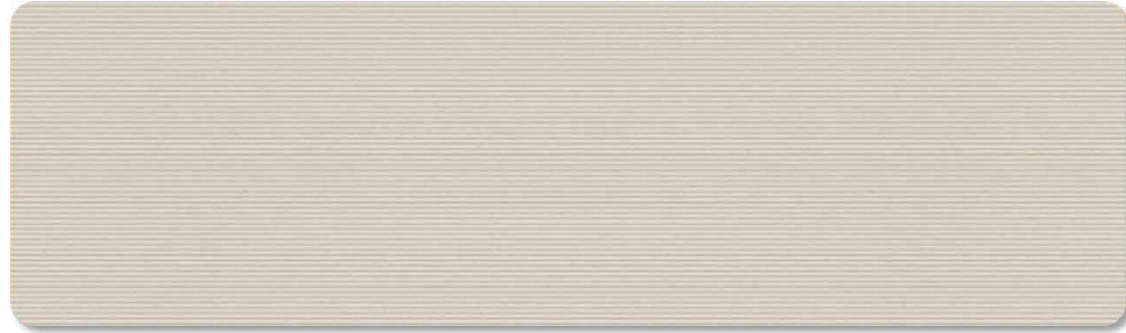
Available colors:
Walnut-863

Configuration

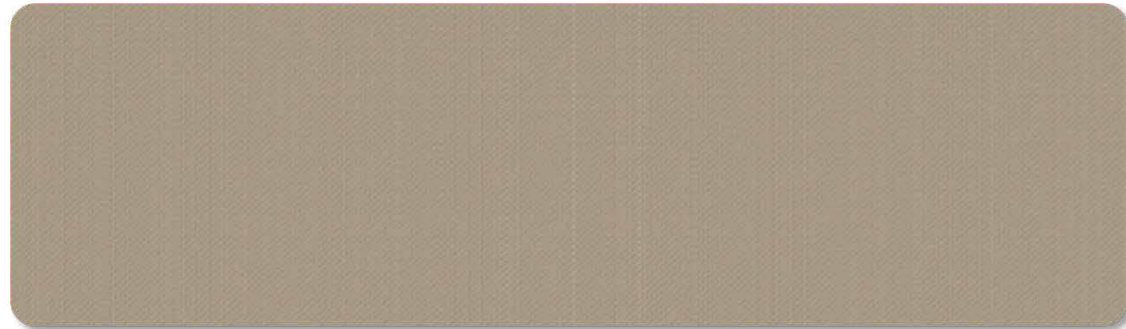
No.: T213-827
Color: Khaki Gray-827
Material: Carbon Crystal Panel
Dimension: 2440H 920W
Technique: Inlay

Available colors:
Edinburgh Warm Gray-826,
Phantom Gray-828

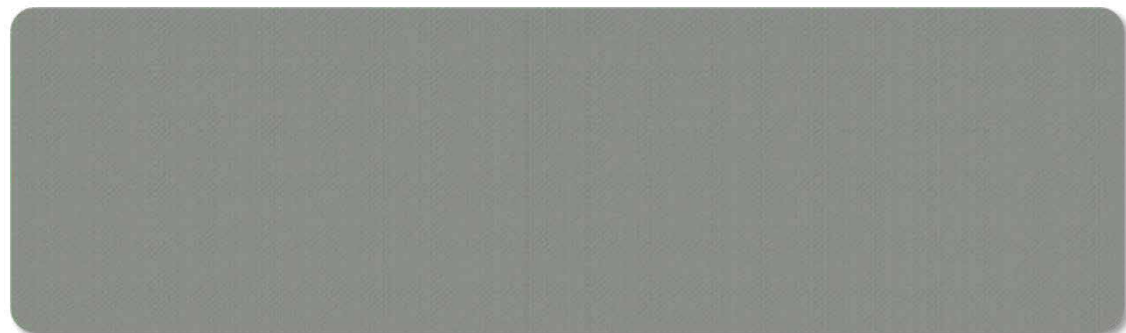
T-PM-G-2 SERIES-ECOLOGICAL DOOR (PROJECT) COLOR OPTION



Color: Edinburgh Warm Gray-826



Color: Khaki Gray-827



Color: Phantom Gray-828



Color: Walnut-860



Color: Walnut-861



Color: Noah-862



Color: Noah-863



Color: Elmwood-865

Door fan size: height 2100mm * width 900mm, door thickness 43mm. series with "G" for the project style.

P-PM-G SERIES

ECOLOGICAL DOOR (PROJECT)



Configuration

No.: PS-005
Color: Milktea+Shining
Shadow
Technique: Inlay
Dimension: 2250H 920W

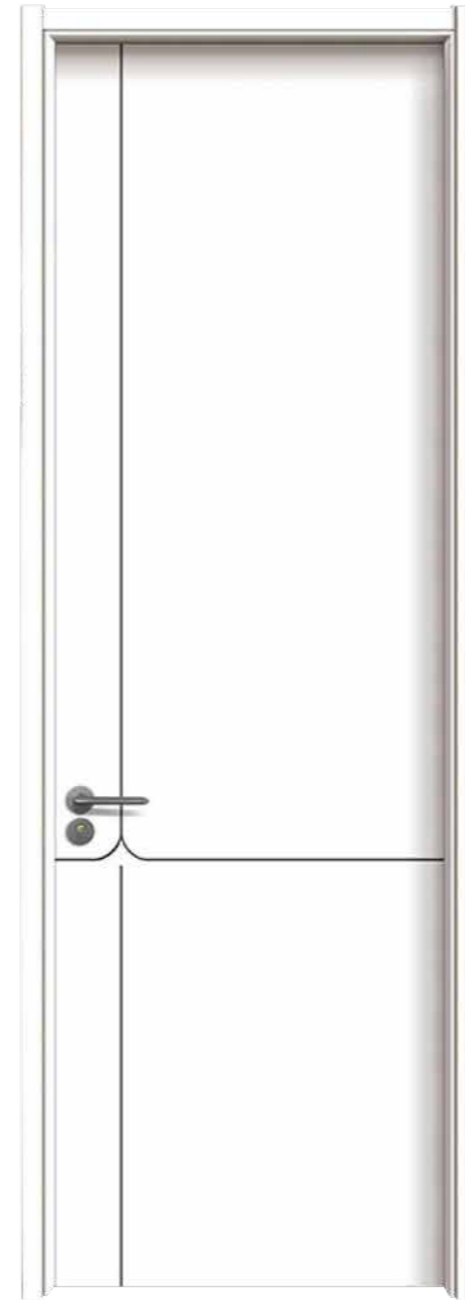


No.: PS-005
Color: Cement
Grey+Shining Shadow
Technique: Inlay
Dimension: 2250H 920W



P-PM-G SERIES

ECOLOGICAL DOOR (PROJECT)



Configuration

No.: LT-008

Color: Milk tea

Technique: Beautiful seams

Dimension: 2250H 920W

No.: LT-013

Color: Cement ash

Technique: Beautiful seams

Dimension: 2250H 920W

Configuration

No.: LT-009

Color: Iceberg White

Technique: Beautiful seams

Dimension: 2250H 920W

No.: LT-010

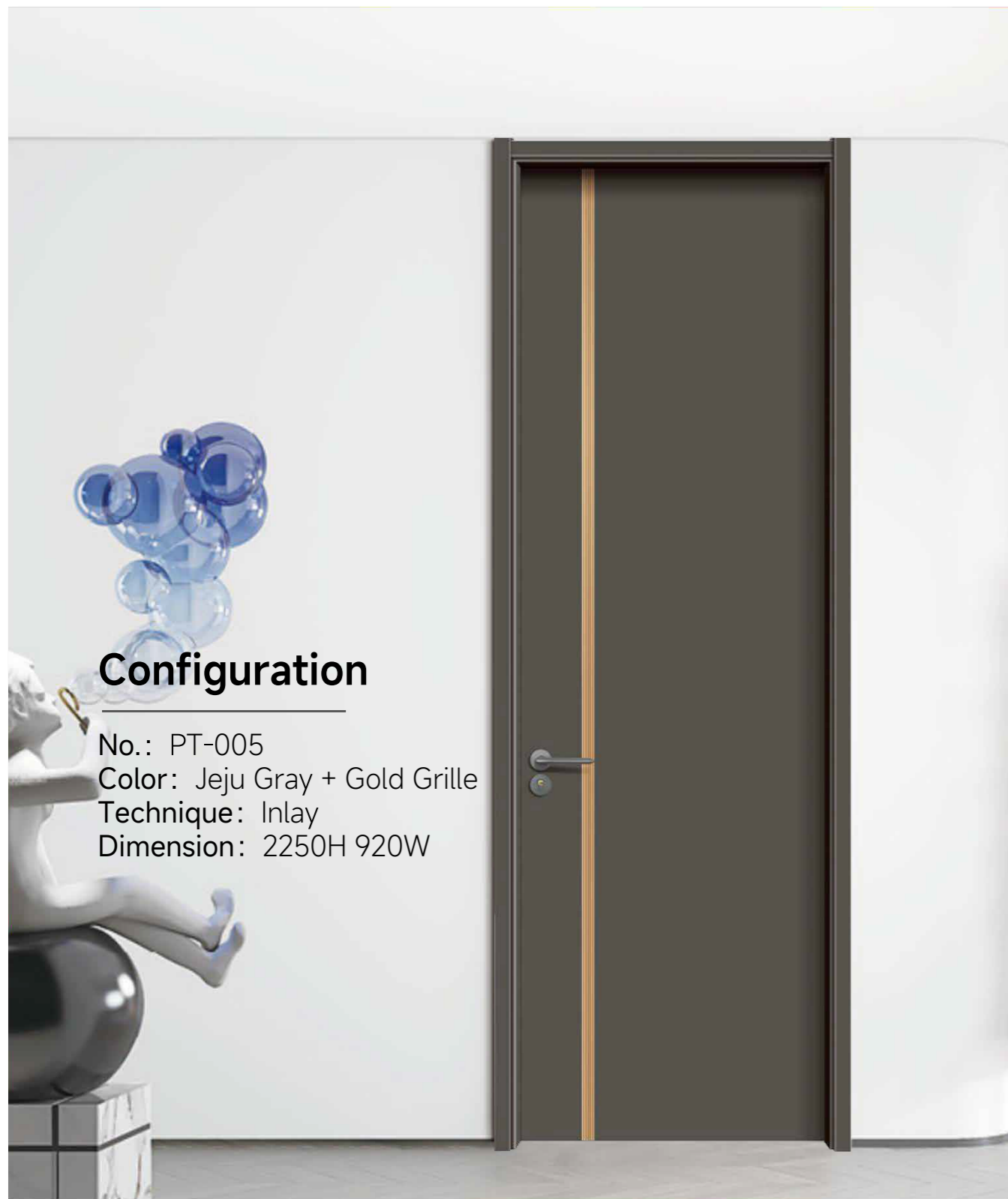
Color: Iceberg White

Technique: Beautiful seams

Dimension: 2250H 920W

P-PM-G SERIES

ECOLOGICAL DOOR (PROJECT)



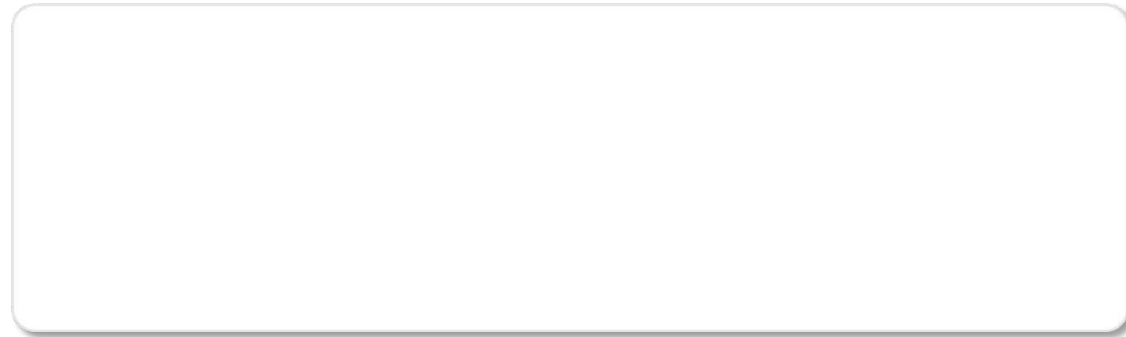
配置 Configuration

No.: LT-022
Color: Milk tea
Technique: Panel
Dimension: 2250H
920W

No.: LT-023
Color: Cement ash
Technique: Panel
Dimension: 2250H
920W

No.: LT-025
Color: Jeju Gray
Technique: Panel
Dimension: 2250H
920W

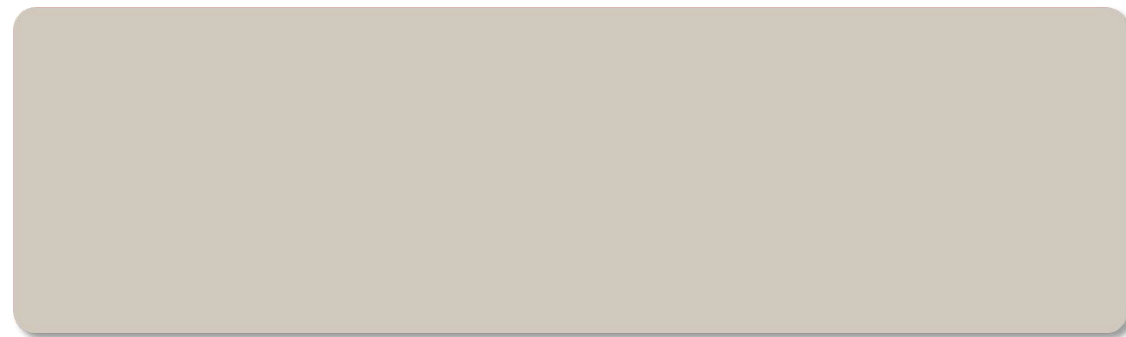
P-PM-G SERIES-ECOLOGICAL DOOR (PROJECT) COLOR OPTION



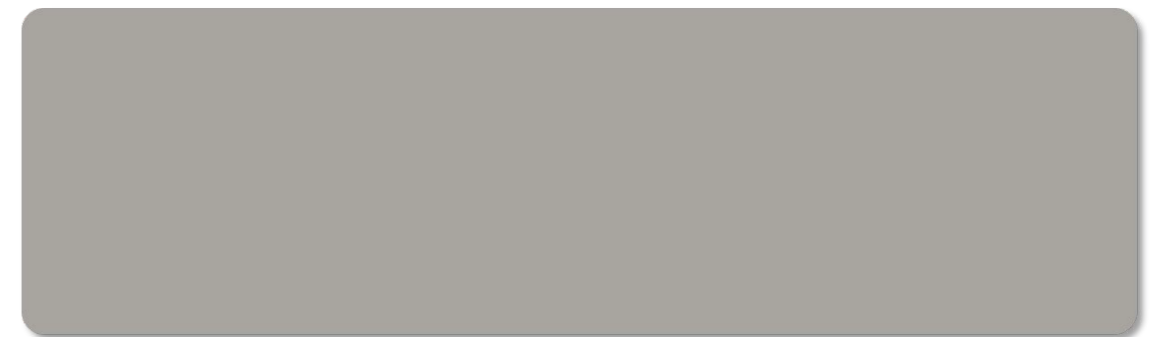
Color: PMG-01 Iceberg White



Color: PMG-02 Jeju Gray



Color: PMG-03 Milk Tea



Color: PMG-04 Cement Grey



Color: PMG-05 Walnut 1



Color: PMG-06 Walnut 2

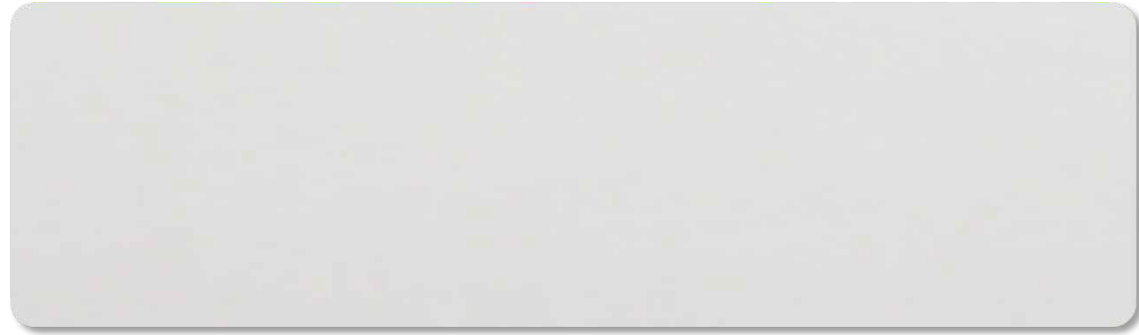
series with "G" for the project style.

L-PM SERIES

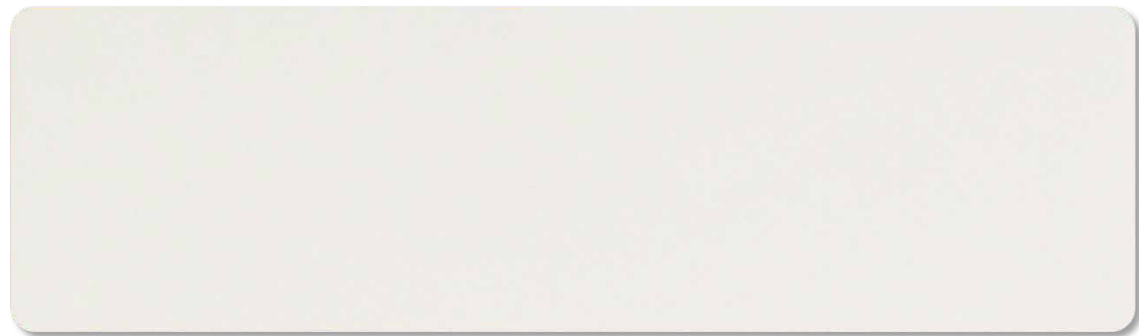
PAINTED ECOLOGICAL DOOR



L-PM SERIES-PAINTED ECOLOGICAL DOOR COLOR OPTION



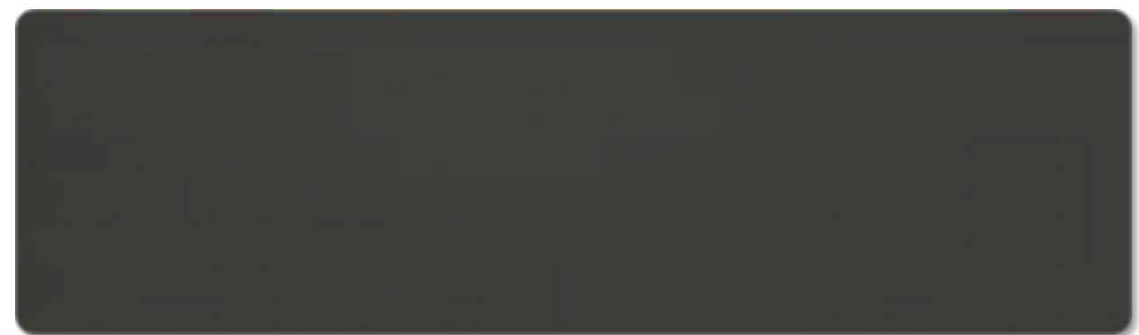
Color: L-3101B



Color: L-3122B



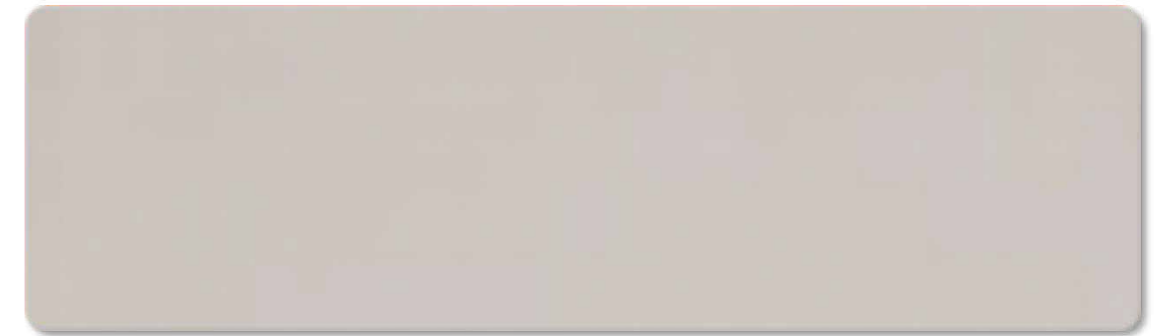
Color: L-3131B



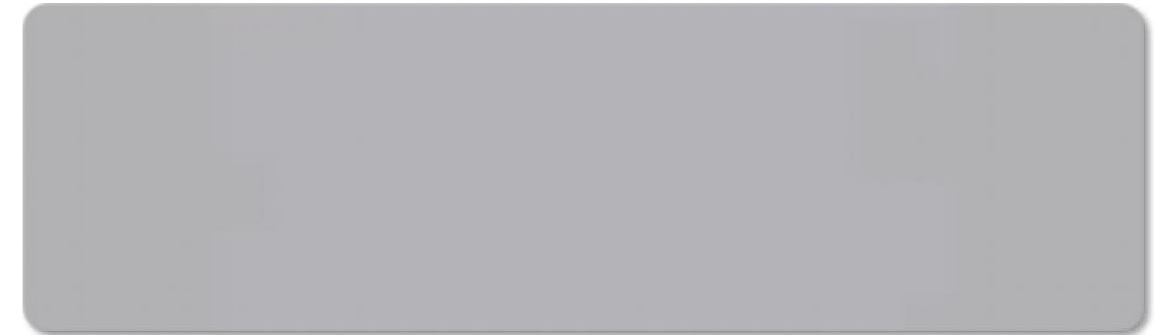
Color: L-3136B



Color: L-3137B



Color: L-3158B



Color: L-3178B



Color: L-3179B

L-ZM SERIES

PAINTED ECOLOGICAL DOOR WITH SHAPE



L-ZM SERIES

PAINTED ECOLOGICAL DOOR WITH SHAPE



Configuration

Material: Lacquer

Core type: MDF

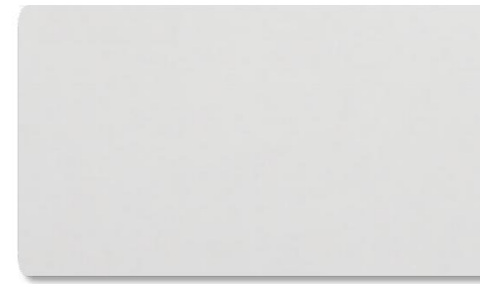
Color Finish: Lacquered Surface

Door Style: Panel /French Door

Dimension: 2100H 800W

Thickness: 40mm、35mm

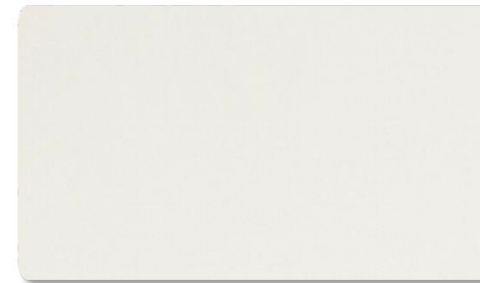
Color Option



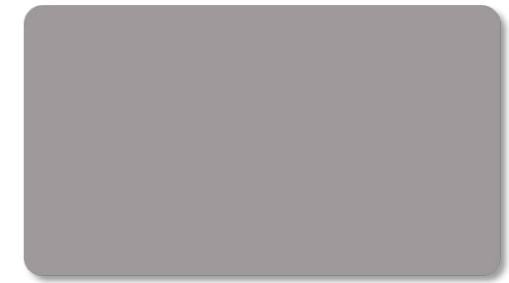
Color: L-3101B



Color: L-3102B

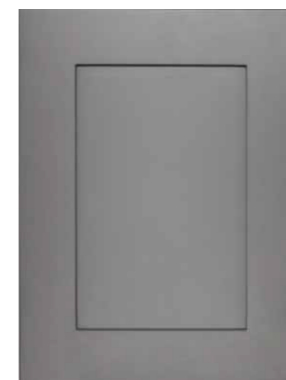


Color: L-3122B



Color: L-3162B

Style Option



C0211-B



C0211-B



C0202-B

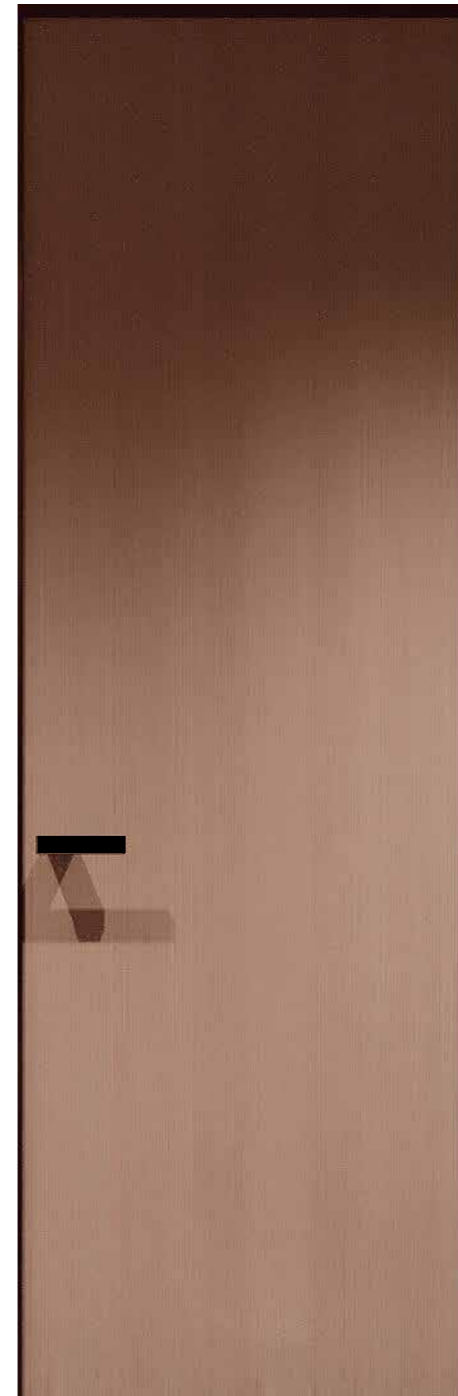
LM-PM SERIES

ALUMINUM ECOLOGICAL DOOR



LM-PM SERIES

ALUMINUM ECOLOGICAL DOOR



Configuration

Material: Aluminum
Core Type:
Plywood/Particle Board
Color Finish: Finish
Frame Material Color: Black/White
Door Type: Casement Door
Dimension: 2700H 1000W
Thickness: 45mm

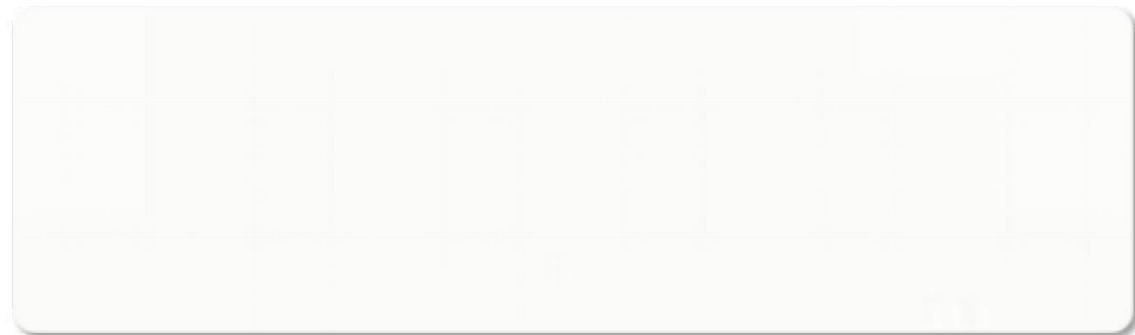
LM-PM SERIES-ALUMINUM ECOLOGICAL DOOR COLOR OPTION (only flat panel, without shape)



Color: Y-115



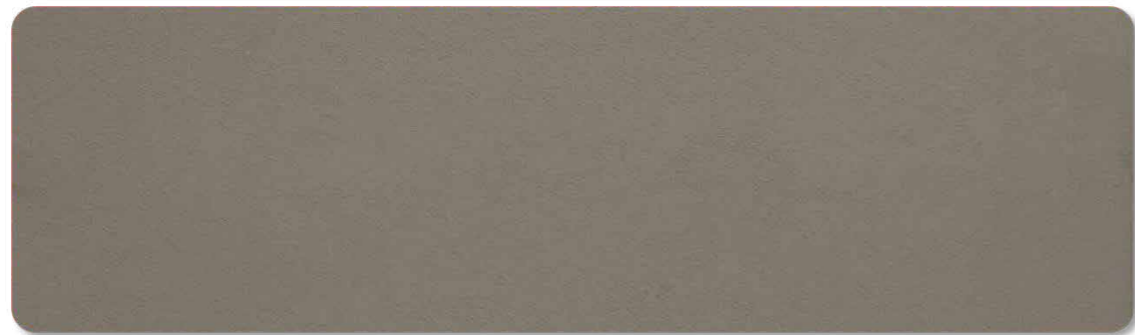
Color: Y-126



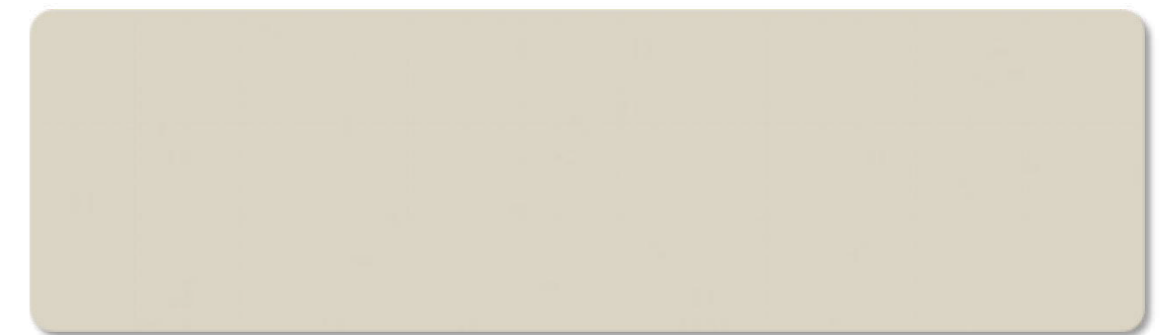
Color: Y-118



Color: Y-127



Color: Y-122



Color: Y-130



Color: Y-125



Color: Y-503

YX-PM-1 SERIES

ECOLOGICAL INVISIBLE DOOR



YX-PM-2 SERIES

ALUMINUM INVISIBLE DOOR



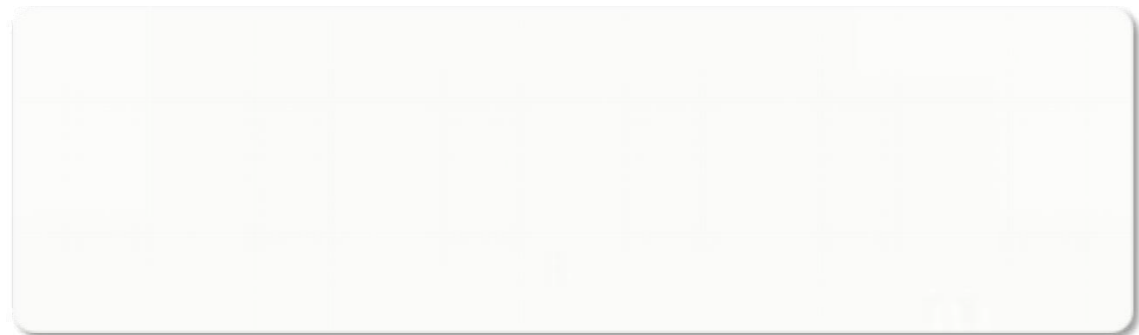
YX-PM SERIES-INVISIBLE DOOR COLOR OPTION



Color: Y-115



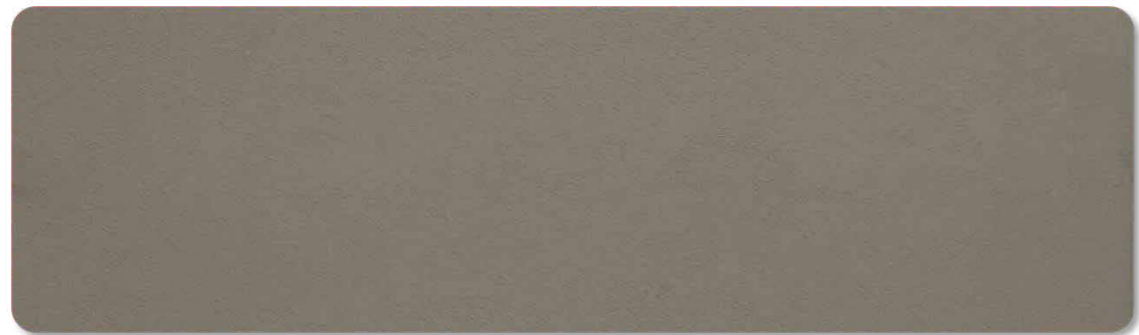
Color: Y-126



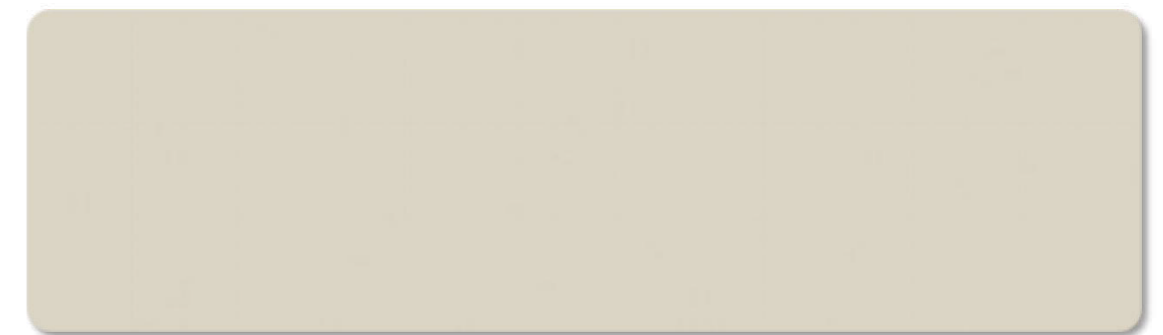
Color: Y-118



Color: Y-127



Color: Y-122



Color: Y-130



Color: Y-125



Color: Y-503

WPC-M-L-G01 SERIES

LACQUER ENGRAVED LINE DOOR (PROJECT)



JYD-09



JYD-15



JYD-13

WPC-M-L-G02 SERIES

LACQUER DECORATIVE LINE DOOR (PROJECT)



JYE-02



JYE-03

WPC-M-L-G02 SERIES

LACQUER DECORATIVE LINE DOOR (PROJECT)



JYE-05



JYE-06



JYE-27



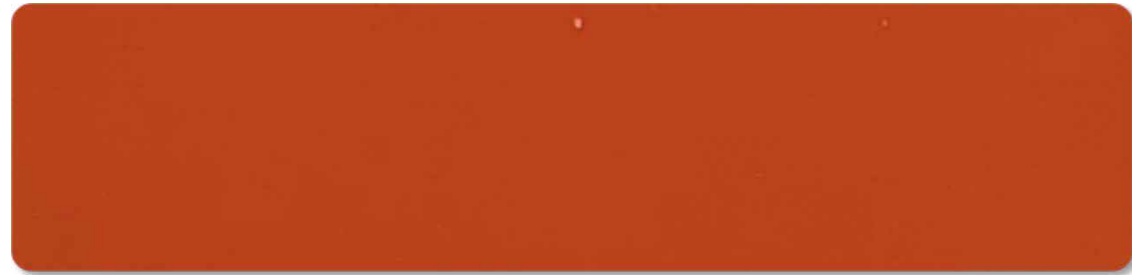
JYE-28

WPC-M-L-G02 SERIES

LACQUER DECORATIVE LINE DOOR (PROJECT)



WPC-M-L-G SERIES-COLOR OPTIONS



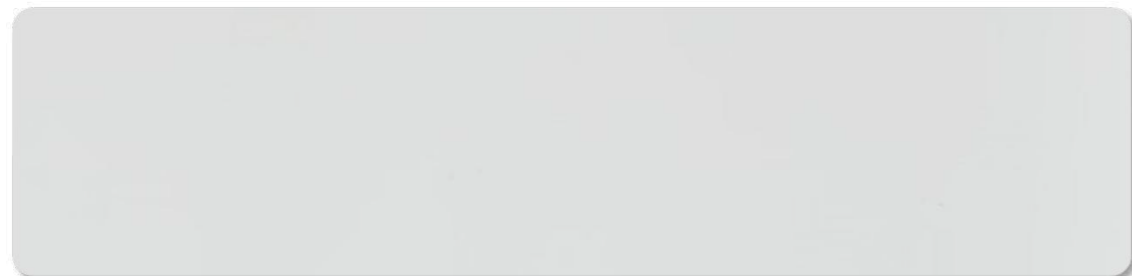
Color: Aurora Orange



Color: Matte Tangerine



Color: Coffee Grey Blue



Color: Snow White



Color: Light French Blue

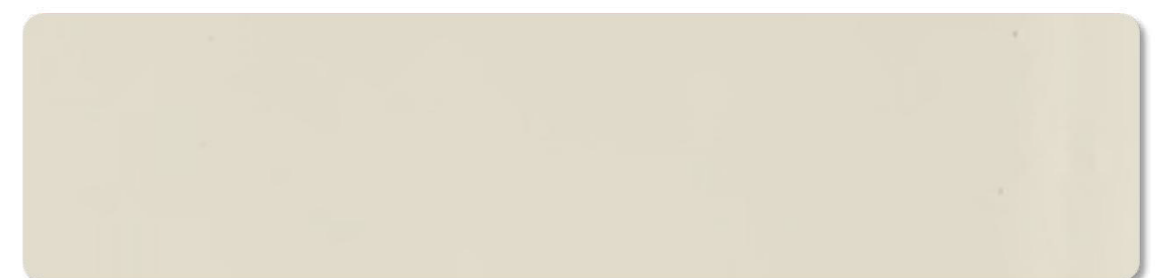
series with "G" for the project style



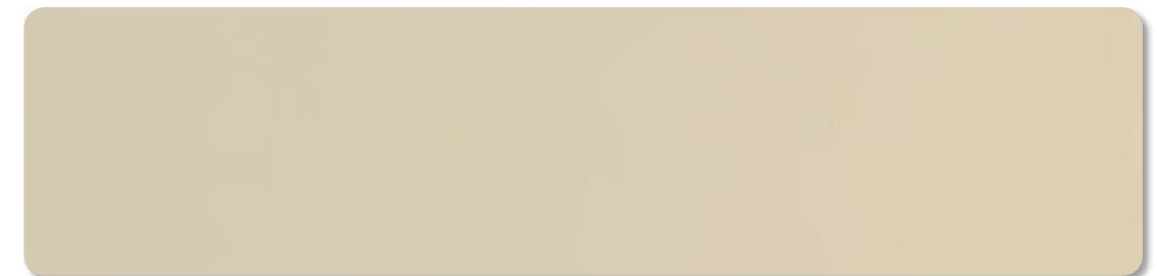
Color: Water-Magnesium Grey



Color: Elegant Grey



Color: Warm White

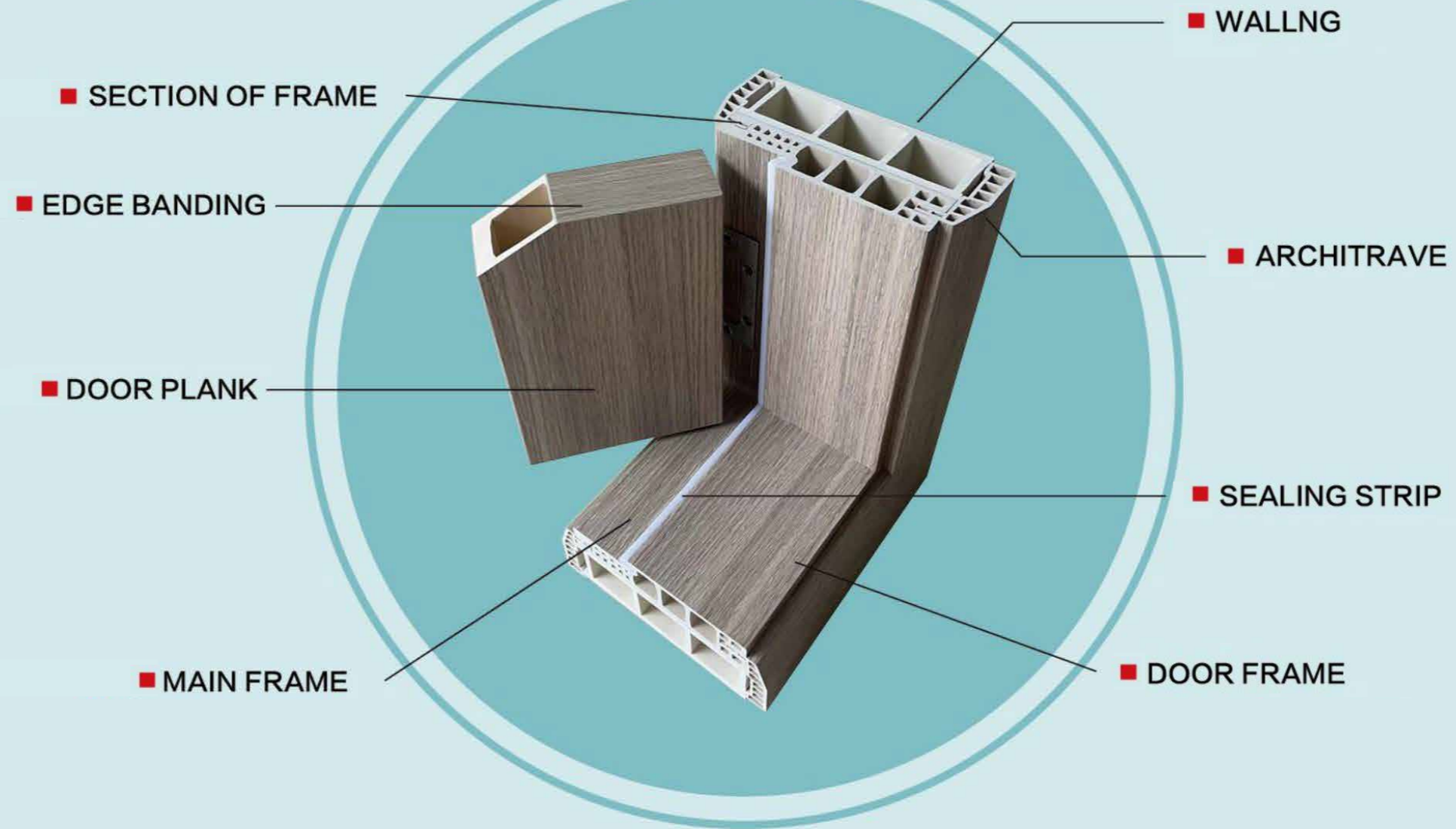


Color: Beige



Color: Chestnut Brown

WPC-M-PVC-G SERIES (PROJECT)



WPC-M-PVC-G01 SERIES

LAMINATING ENGRAVED LINE DOOR (PROJECT)



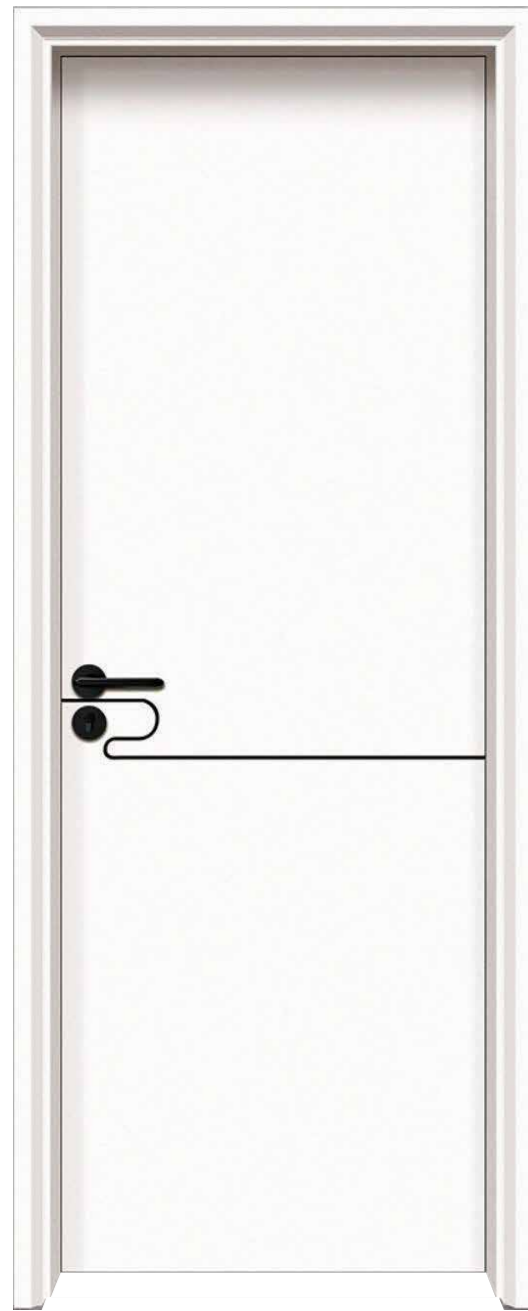
JYA-02



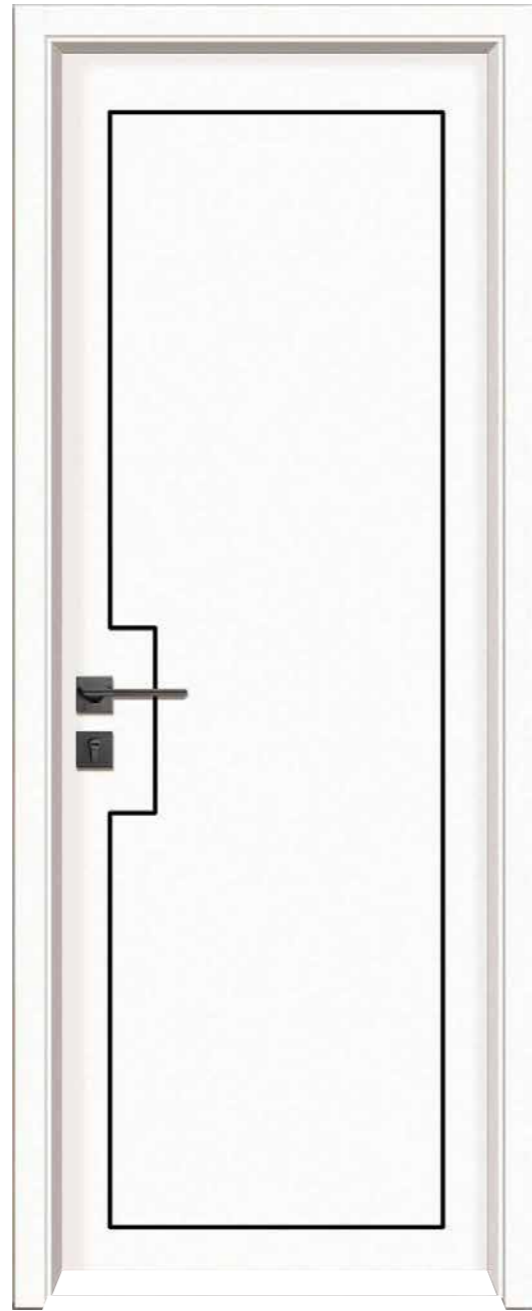
JYA-12

WPC-M-PVC-G01 SERIES

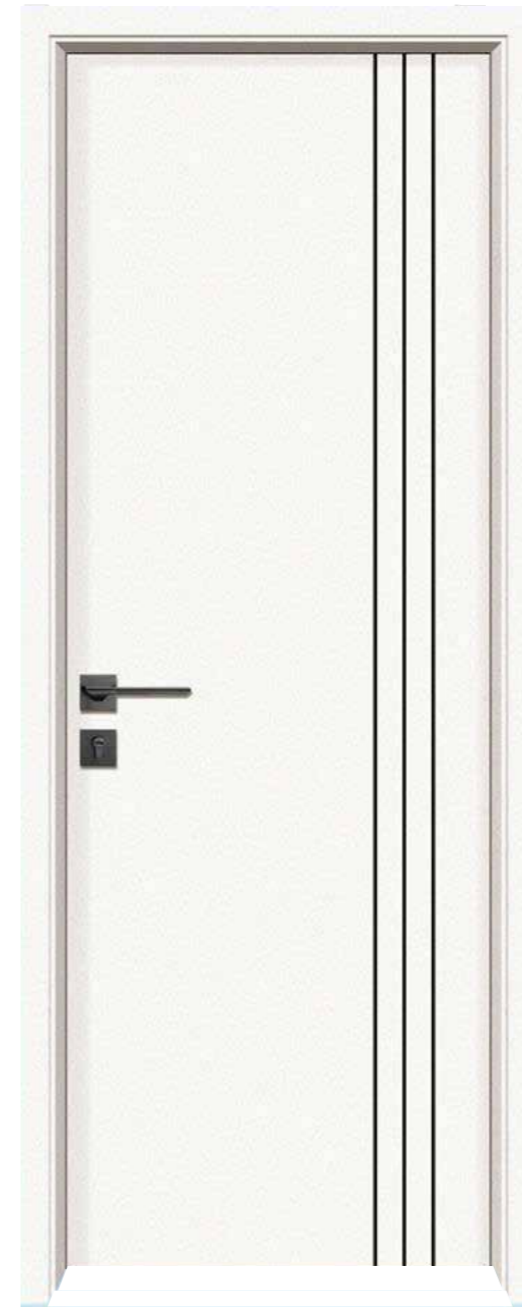
LAMINATING ENGRAVED LINE DOOR (PROJECT)



JYA-31



JYA-35



JYA-50



JYA-56

WPC-M-PVC-G01 SERIES

LAMINATING ENGRAVED LINE DOOR (PROJECT)



WPC-M-PVC-G02 SERIES

LAMINATING DECORATIVE LINE DOOR (PROJECT)



WPC-M-PVC-G02 SERIES

LAMINATING DECORATIVE LINE DOOR (PROJECT)



JYB-24



JYB-28



JYA-43

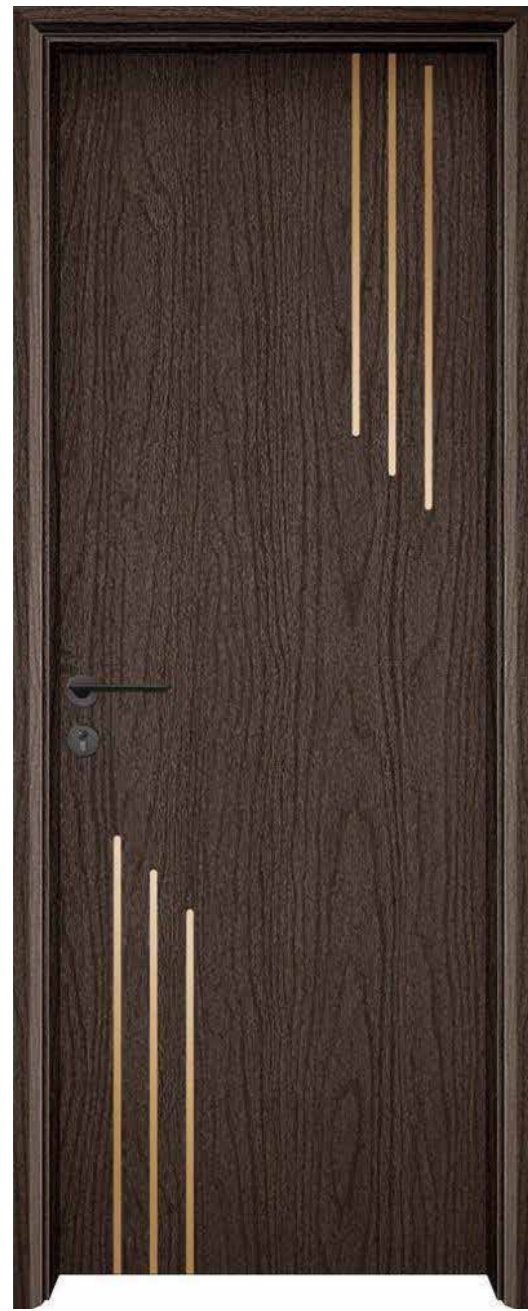
WPC-M-PVC-G02 SERIES

LAMINATING DECORATIVE LINE DOOR (PROJECT)

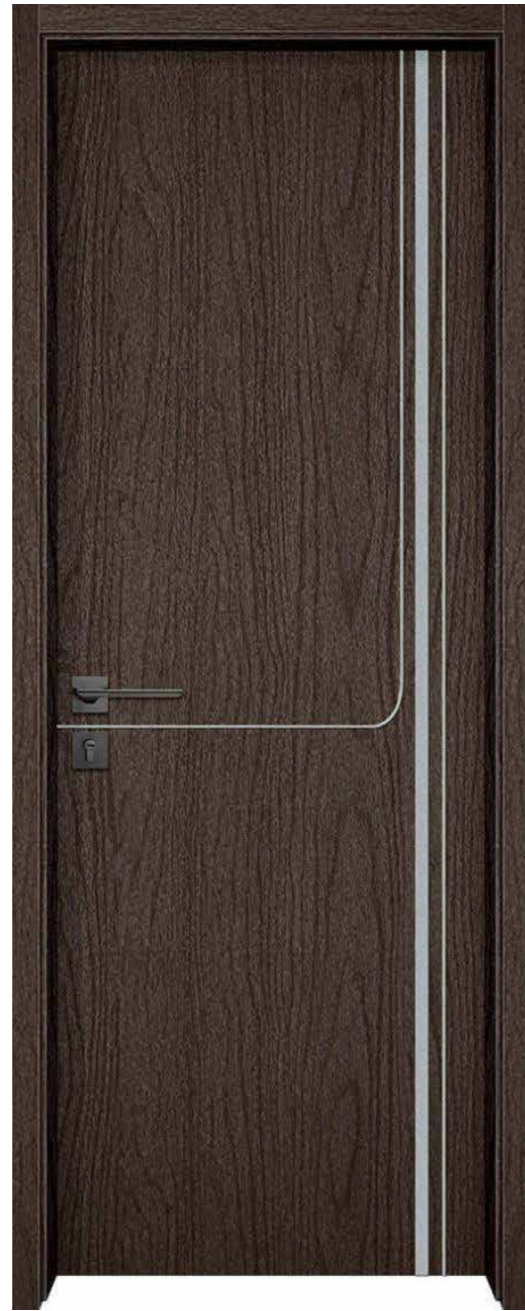


WPC-M-PVC-G02 SERIES

LAMINATING DECORATIVE LINE DOOR (PROJECT)



JYB-27



JYB-42



JYB-39



JYB-40

WPC-M-PVC-G03 SERIES

LAMINATING GLASS DOOR (PROJECT)



JYC-04

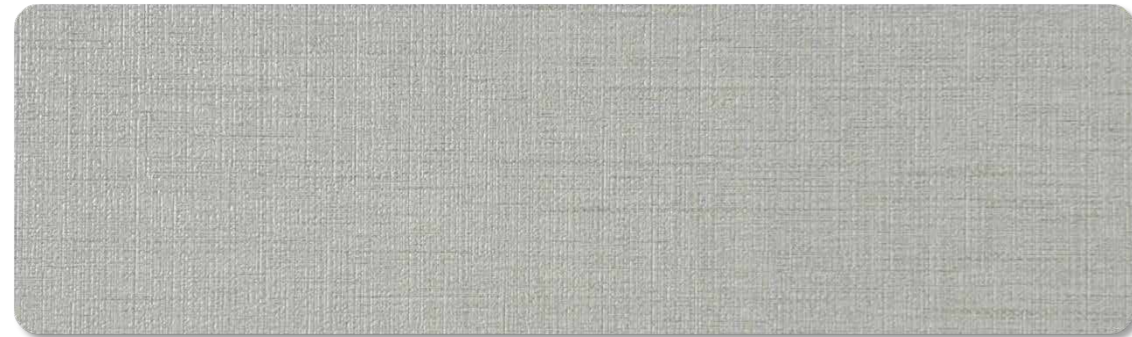


JYC-11

WPC-M-PVC-G SERIES-COLOR OPTION 1



Color: Silver Veins Walnut



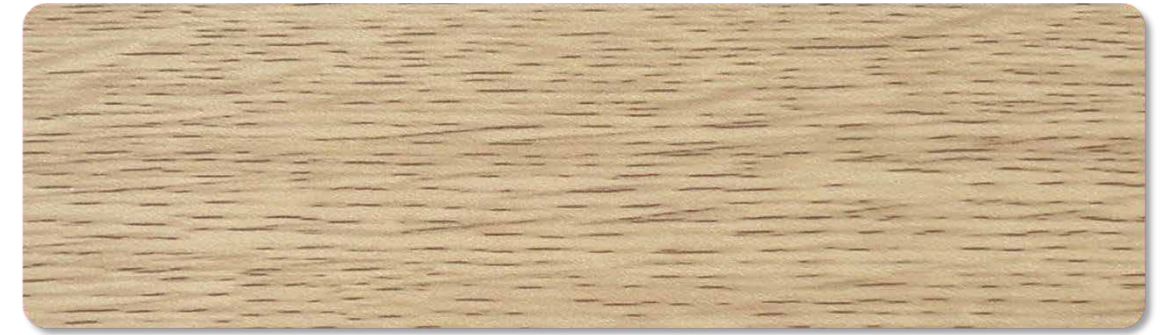
Color: Milan Fabric Pattern



Color: Ivory White



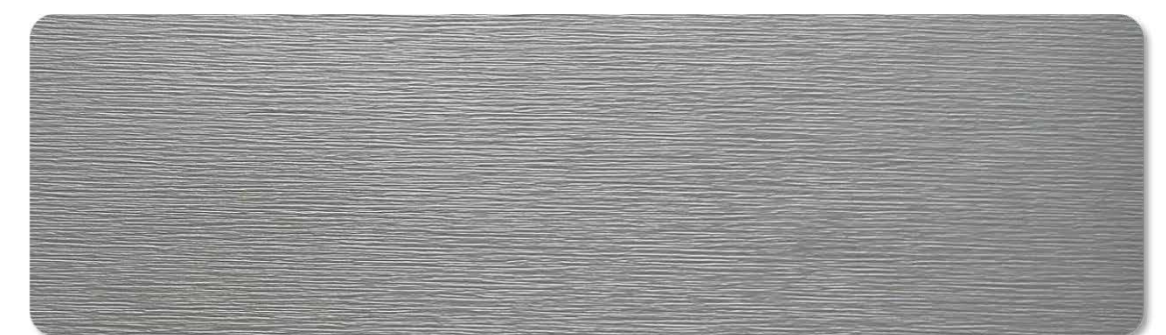
Color: Wax-Finished Oak



Color: Lilac Boxwood



Color: Walnut Wood Grain



Color: Xingyao Grey

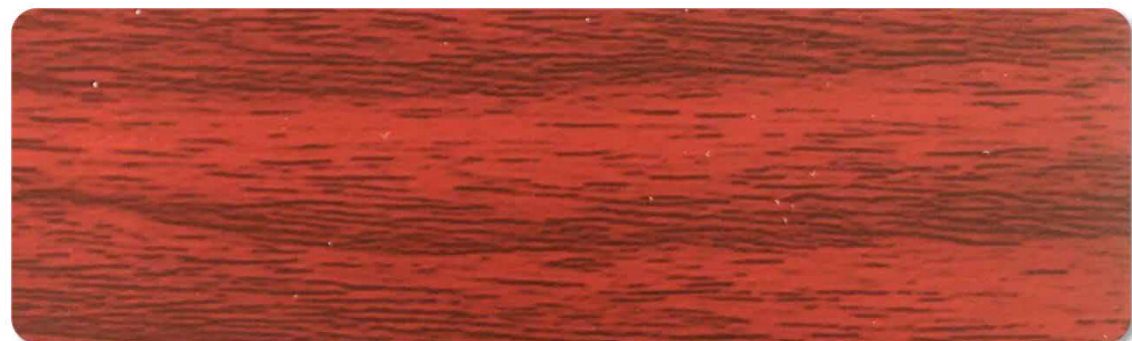


Color: Smart Wood

WPC-M-PVC-G SERIES-COLOR OPTION 2



Color: Stylish Wood



Color: Wood Grain Red



Color: Exquisite White



Color: Wood Grain Grey



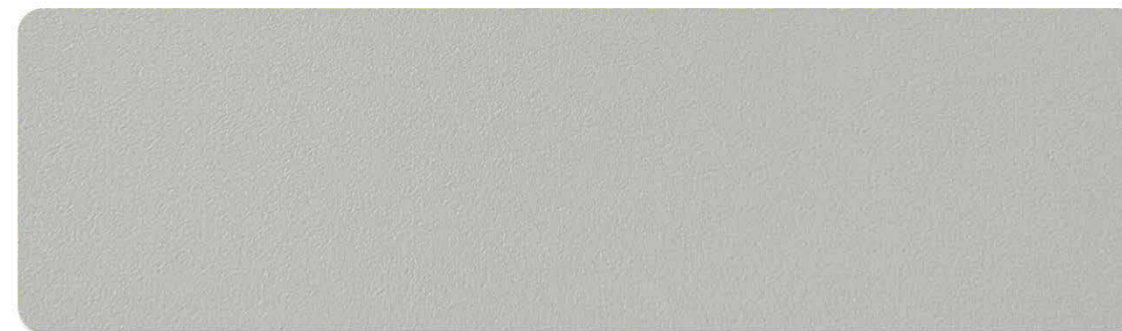
Color: Egger Walnut



Color: Khaki Gray



Color: Green Oak



Color: : Moonlight White

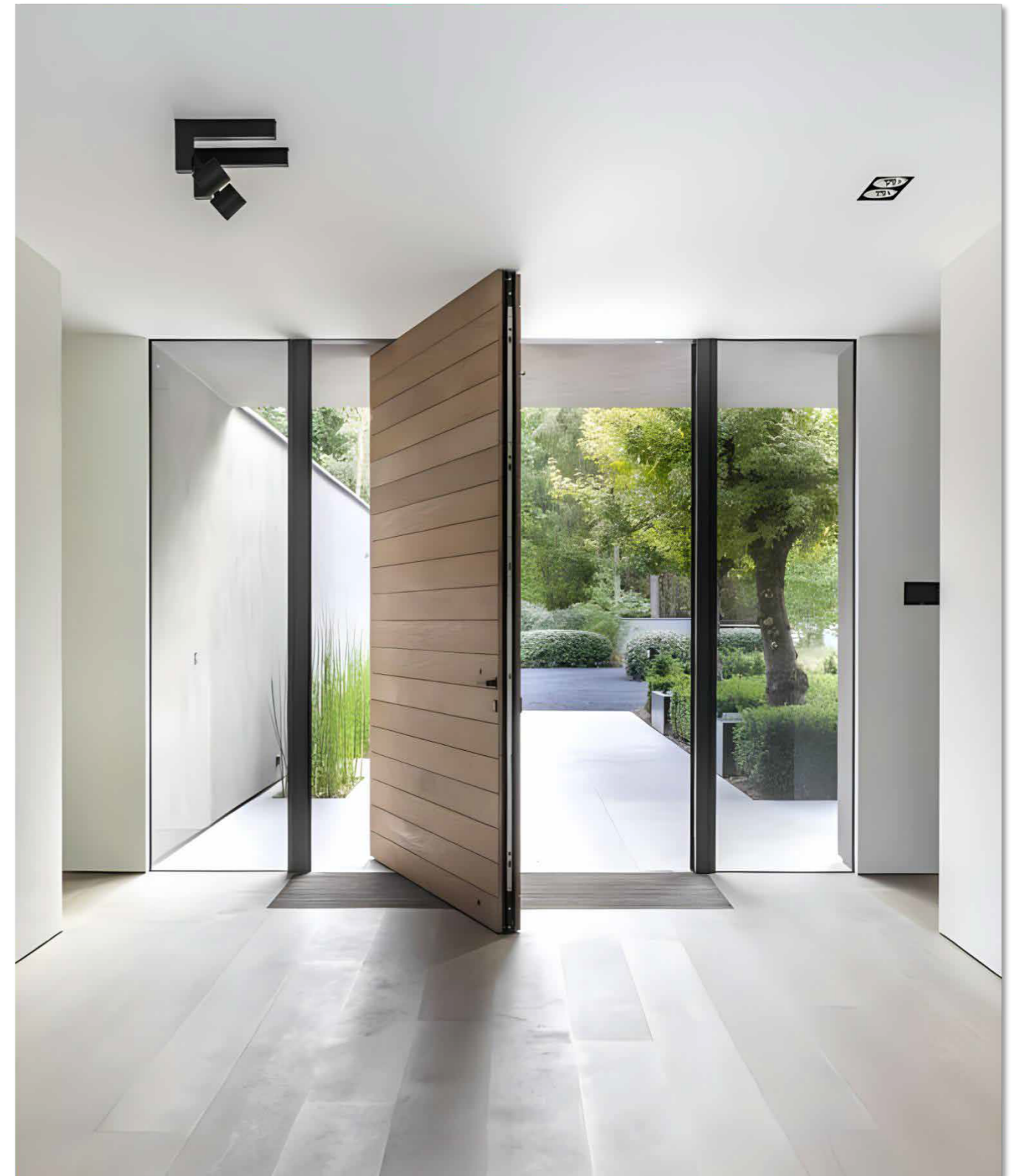
RFM SERIES

ENTRY DOOR

Luxfit
The perfect fit for a luxurious home.

Redefine Your Entrance with the Elegant Pivot Door

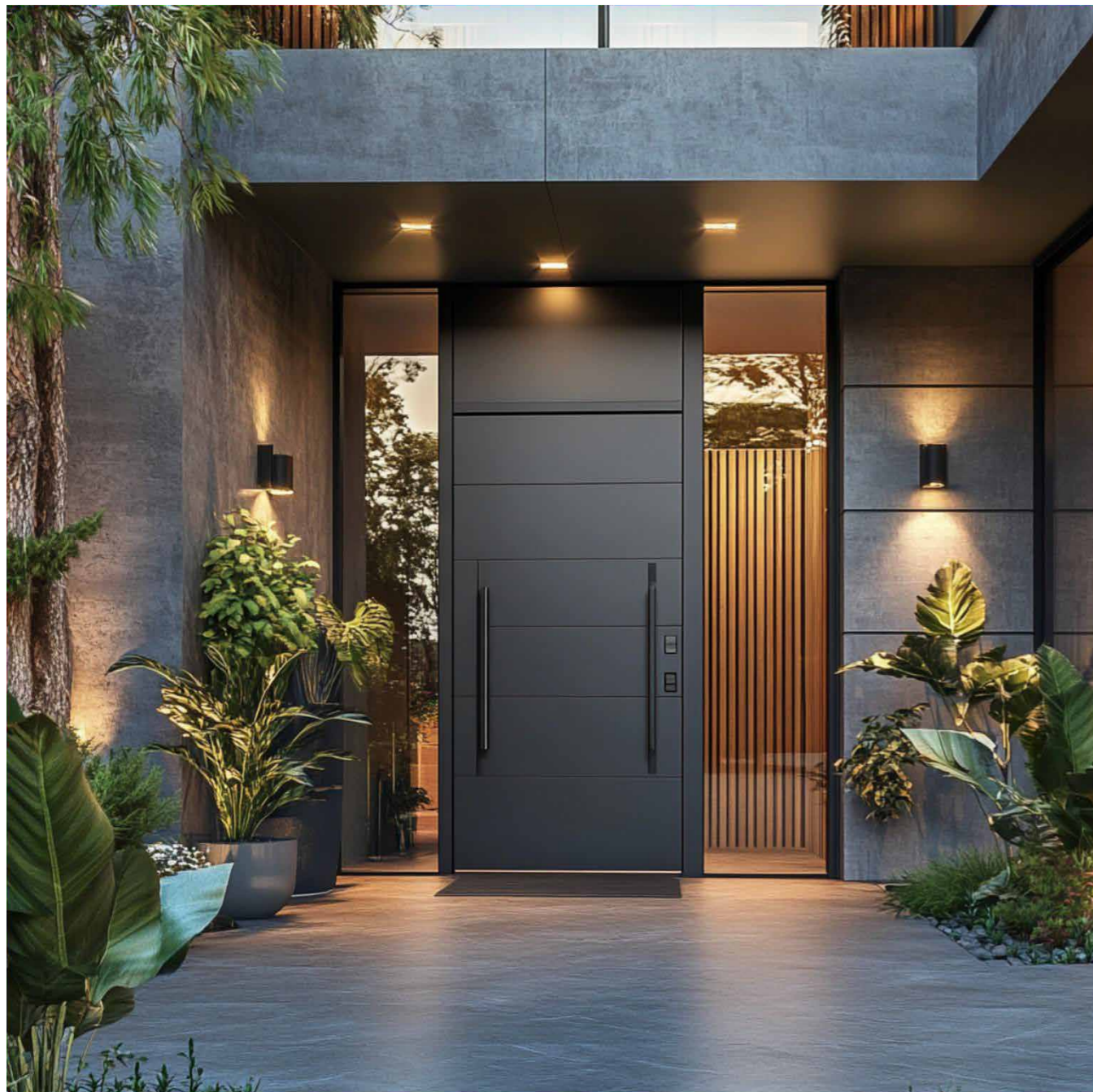
Step into a new dimension of elegance and innovation with our precision-crafted pivot doors. Seamlessly blending modern aesthetics with unparalleled functionality, these doors are more than just an entryway—they are a statement of sophistication and design.



RFM SERIES

ENTRY DOOR

Aluminum Entry Door

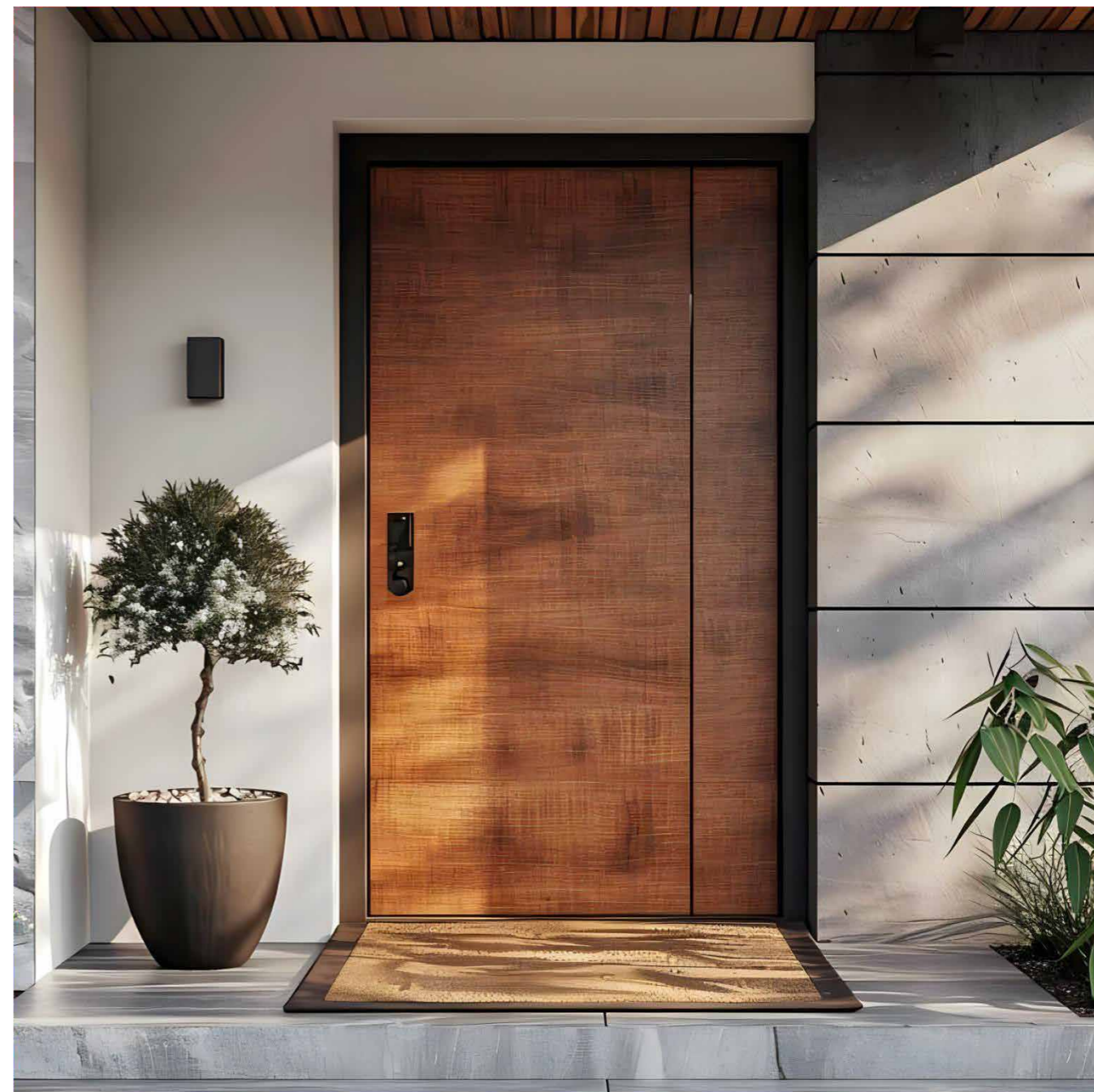


Configuration

Material: 6063-T5 Aluminum
Color Finish: Painted
Security Features: anti-theft
Insulation: Reinforced frame

Door Style: Customized
Dimensions: Customized
Glass Options: Yes

Aluminum Wooden Entry Door



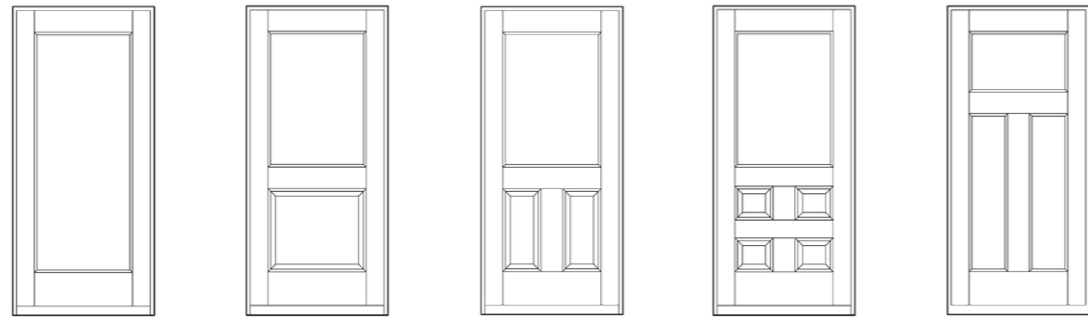
Configuration

Material: 6063-T5 Aluminum
Color Finish: Painted
Security Features: anti-theft
Insulation: Reinforced frame

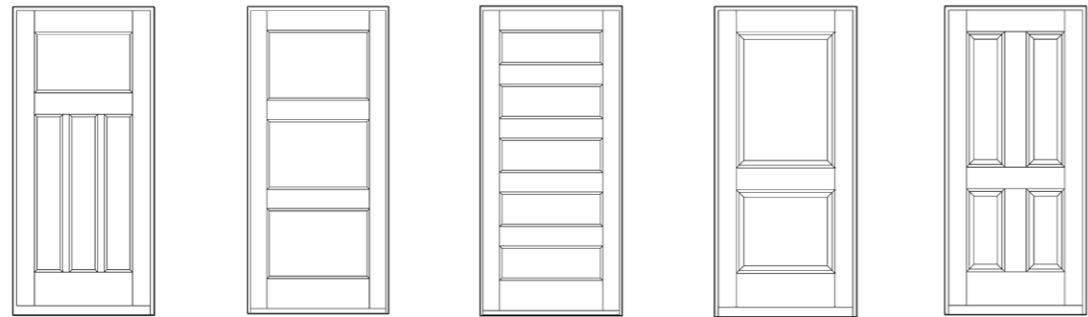
Door Style: Customized
Dimensions: Customized
Glass Options: Yes

RFM SERIES-ENTRY DOOR DOOR TYPE OPTION

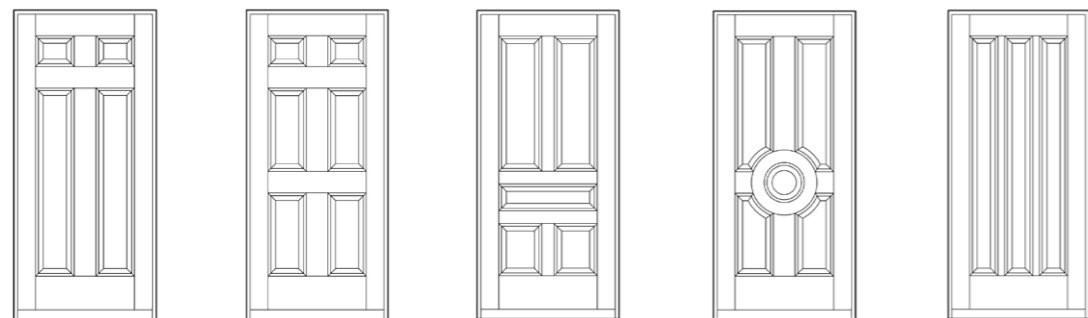
Regular molding door styles



Type1 Type2 Type3 Type4 Type5

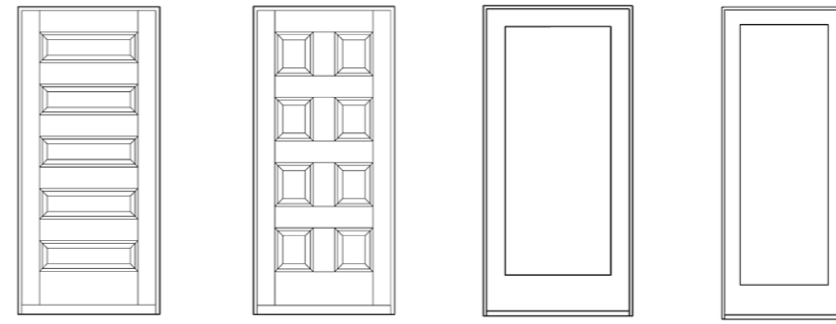


Type6 Type7 Type8 Type9 Type10



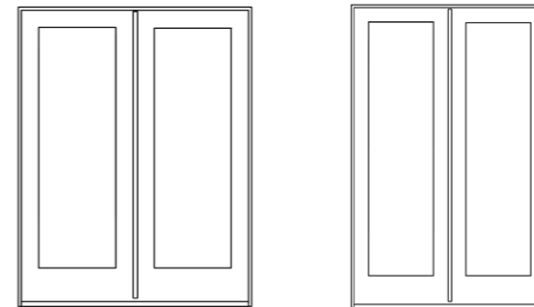
Type11 Type12 Type13 Type14 Type15

Moulding door style with glass



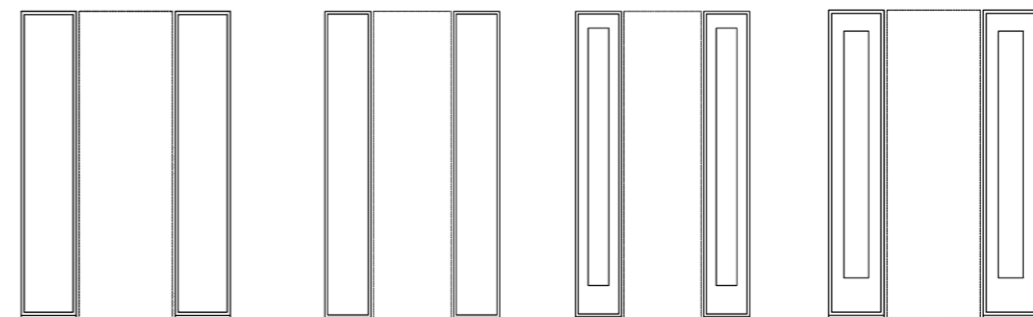
Type1 Type2 Type3 Type4

Bi-parting molding door style



Type1 Type2

Edge molding door styles



Type1 Type2 Type3 Type4

WYM SERIES

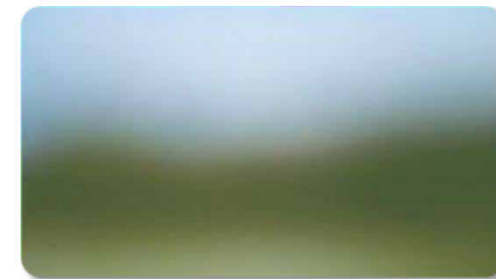
BATHROOM DOOR



Configuration

Material: Aluminum+Glass
Dimension: 2100H 800W
Thickness: 35mm

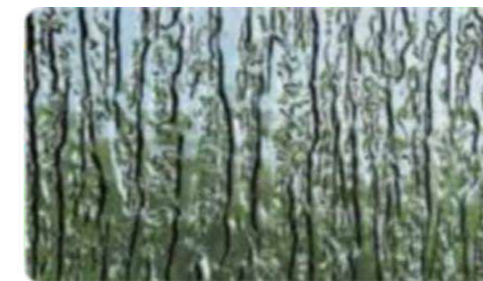
Glass Option



Galss: Frosted



Galss: Reed



Galss: Rain



Galss: Obscured

CKM SERIES

GARAGE DOOR-TEMPERED GLASS REINFORCED RIBBED DOOR



Configuration

Profile: 6063-T5

primary aluminum, Coating

Color: Milky white, Black

Advantages: Corrosion resistance,
High temperature resistance,
Strong toughness

Production process: Cutting, Splicing,
Assembling

Material thickness: Aluminum
profile 1.4MM, with 3mm stiffener,
5mm tempered glass

Panel total thickness: 40mm

**Thickening thickness at
hinge location:** 2.6mm

*To ensure that the hinges are securely mounted, a rubber seal will be provided at the bottom of the sectional door panel.

Configuration

Profile: 6063-T5

primary aluminum, Coating

Color: Milky white, Black

Advantages: Corrosion resistance,
High temperature resistance,
Strong toughness

Production process: Cutting, Splicing,
Assembling

Material thickness: Aluminum
profile 1.4MM, with 3mm stiffener,
5mm tempered glass

Panel total thickness: 40mm

**Thickening thickness at
hinge location:** 2.6mm

*To ensure that the hinges are securely mounted, a rubber seal will be provided at the bottom of the sectional door panel.

CKM SERIES

GARAGE DOOR-ALUMINUM PANELIZED GARAGE DOOR



Configuration

Profile: 6063-T5

primary aluminum, Coating

Advantages: Corrosion resistance,
High temperature resistance,
Strong toughness

Production process: Cutting, Splicing,
Assembling

Material thickness: 1.4mm

Panel total thickness: 40mm

**Thickening thickness at
hinge location:** 2.6mm

*To ensure that the hinges are securely mounted, a rubber seal will be provided at the bottom of the sectional door panel.



Configuration

Profile: 6063-T5

primary aluminum, Coating

Advantages: Corrosion resistance,
High temperature resistance,
Strong toughness

Production process: Cutting, Splicing,
Assembling

Material thickness: 1.4mm

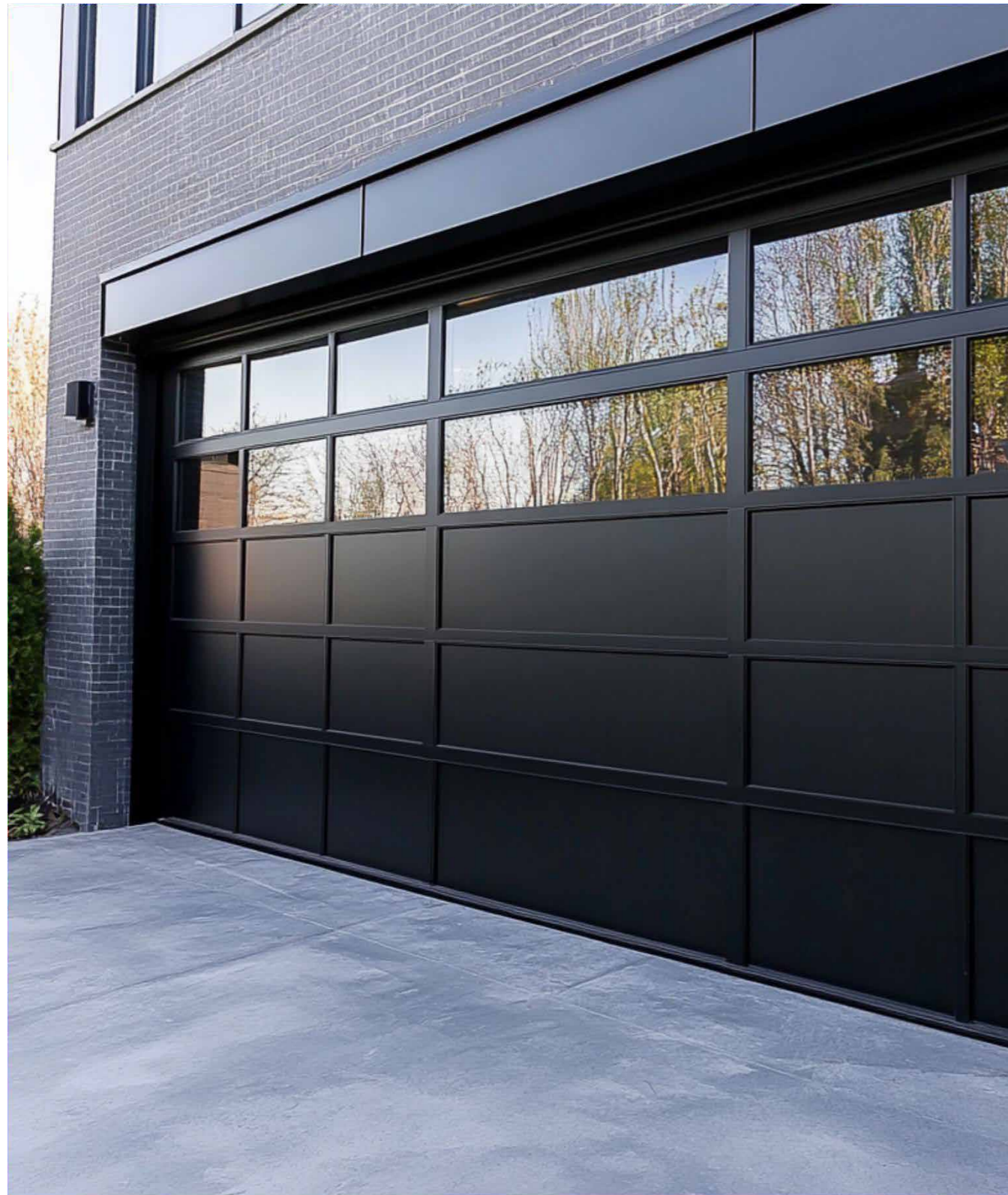
Panel total thickness: 40mm

**Thickening thickness at
hinge location:** 2.6mm

*To ensure that the hinges are securely mounted, a rubber seal will be provided at the bottom of the sectional door panel.

CKM SERIES

GARAGE DOOR-PURE FLAT SUEDE FOAM GARAGE DOOR



The door panels are manufactured using Europe's advanced, high-quality large-scale garage door production line, bringing together top industry experts. After years of meticulous development, the technology has reached the highest standards, incorporating the world's most environmentally friendly foaming technology. The foam density inside the door panels reaches up to 50 kg/m², with a closed-cell rate of 99%. This ensures excellent thermal insulation, high overall strength, and stability, providing a service life of 25 to 30 years.

With outstanding design and reliable quality, this innovation creates unlimited possibilities for the future of high-end garage doors. It successfully elevates domestic garage door technology to a new level, delivering world-class quality in premium residential garage doors.

Configuration



Mirror Finish Panel

The advantage of mirror finish panels is that dirt and moisture slide off easily. They are especially suitable for modern-style designs.



Wood Veneer Grain

This classic embossed surface offers a unique visual experience with distinctive raw wood grain and bold lines.



Small Ripple Texture

This ripple-patterned surface has a strong three-dimensional effect, with a stylish play of light and shadow that complements architectural designs.

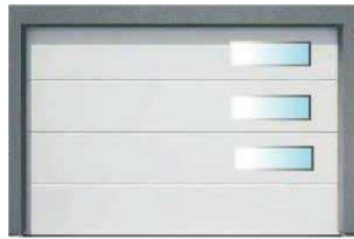


Aluminum-Magnesium-Manganese Alloy Panel

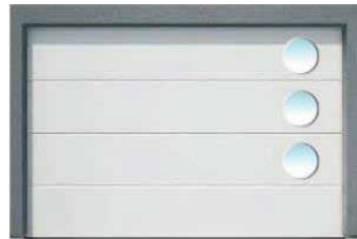
Compared to steel panels, the aluminum-magnesium-manganese alloy panel is more decorative, giving the surface a more elegant and novel appearance.

CKM SERIES-GARAGE DOOR-ACCESSORIES

Garge Door Window Option



Rectangle Aluminum Glass



Circle Aluminum Window

Hardware Accessories



Precision Torsion Spring Balance System

The key feature of the Segmental Torsion Spring System is its ability to ensure your garage door operates quietly, smoothly, and steadily, even with frequent use in harsh environments. The torsion springs are equipped with patented integrated safety protection devices at both ends. If a torsion spring breaks, the safety protection device immediately locks the door shaft in place, preventing the door from falling and ensuring safety.



Ultra-Quiet Operation

Ensures safer operation of the door panels. The system uses Z6200 industrial-grade bearings with N-66 reinforced nylon coating, providing ultra-quiet performance, wear resistance, and high-temperature stability without deformation. It also remains resistant to cracking at temperatures as low as -40°C. The robust roller brackets and secure side tracks eliminate the risk of the garage door derailing. Even when the door is fully open and positioned beneath the ceiling, it remains highly secure.



Invisible Anti-Pinch Design & Thermal Break Interface

The door panels and hinges are equipped with anti-pinch designs to ensure safety. The unique structure of the garage door panels eliminates gaps between panels and at the hinge points, effectively preventing finger pinching. The thermal break interface offers insulation, cold resistance, and lightning protection. To enhance both aesthetics and comfort, the surface is galvanized, followed by pickling, phosphating, and powder coating treatments.

Configuration details



Reinforced Door Panel End Caps

The end caps are thickened and match the shape of the door panel cross-section, offering both aesthetic appeal and enhanced strength and durability.



Ultra-Quiet Adjustable Side Hinges

Even on uneven garage walls, the ultra-quiet adjustable side hinges ensure precise installation. The built-in full-length wear-resistant nylon bushings require no maintenance for a lifetime.



High-Performance Bottom Seal Strip

Made from the latest EPDM (Ethylene Propylene Diene Monomer) material, this seal strip remains flexible in low temperatures without becoming brittle and does not crack at high temperatures, ensuring long-term, efficient sealing.



Specialized Adjustable Lifting Bracket for Door Panels

The specialized adjustable lifting bracket features a steel structure that seamlessly integrates with the bottom aluminum profile, allowing it to support oversized door panels. It enables bi-directional adjustment of the door's height.



Quality Choice, Excellence and Beauty

In the pursuit of excellence, we always adhere to the belief that “quality comes first”. As a leader in the field of full customization, our products not only represent functionality, but also the perfect combination of beauty and practicality. Every interior door, window and closet reflects our dedication to craftsmanship and deep understanding of life aesthetics.

Interior Doors: Each door is an entrance to a new world, beautifully designed and unrivaled in durability, giving your space a unique charm.

Windows and Doors: Our windows and doors do more than protect your home, they are a bridge between you and the outside world. Through transparent glass, they welcome every dawn and dusk, reflecting the beauty of life.

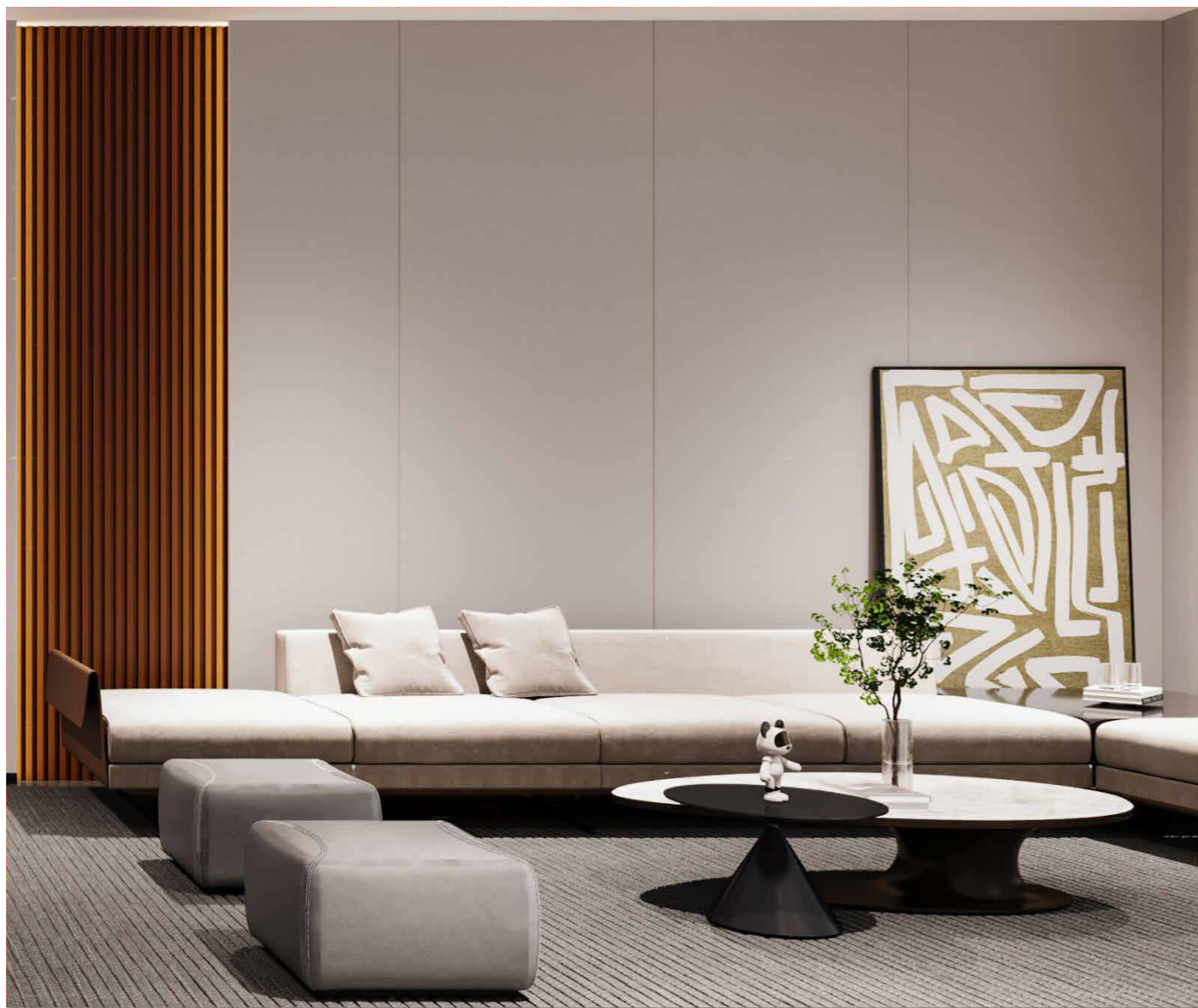
Closets: Well-designed closets not only provide ideal storage space for your clothes, but also symbolize the quality of life, adding vitality and warmth to every corner.

Each product undergoes strict quality control and is committed to providing you with a comfortable and pleasant living experience. Choose us for an elegant and unique lifestyle, and let quality and beauty shine in your home.

—The True Meaning
of Enjoying Life

P·SERIES

THE SAME COLOR WALL PANEL



■ Product Details

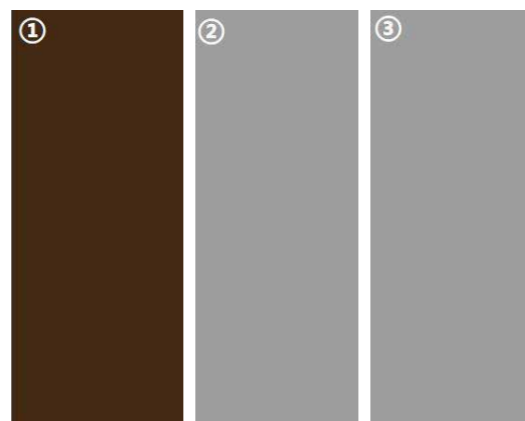
Wall panel process : 18mm PET Wainscotin

Recommended pairing : P·XQS Series

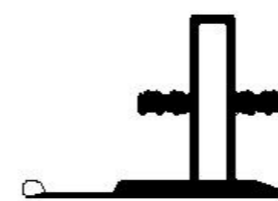
Model : 18mm Wainscotin+18mmChinachem board

Color matching of wall panels :

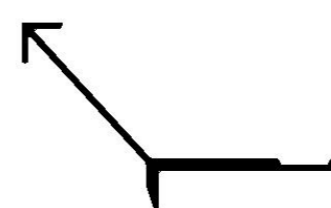
- ① L3651B
- ② L3650B
- ③ K2006



■ Matching Profiles



T-shaped



External corner trim



Trim line



Skirting board

P·SERIES

THE SAME COLOR WALL PANEL



Product Details

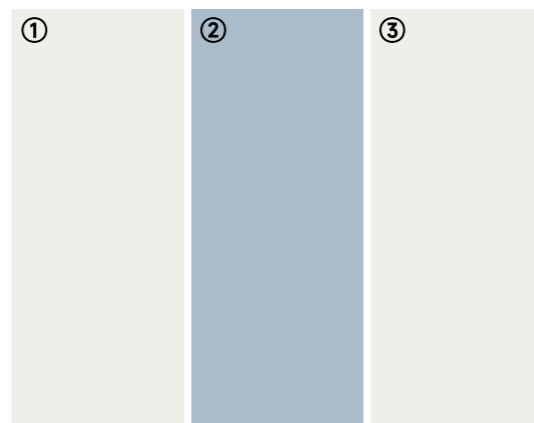
Wall panel process : 18mm Double Finish Wainscoting

Recommended pairing : P·XXD Series

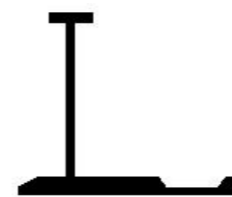
Model : 18mm Wainscoting+18mm Chinachem board

Color matching of wall panels :

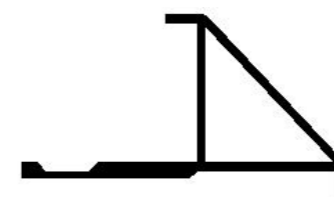
- ① Y130
- ② L3166B
- ③ L3170B



Matching Profiles



I-shaped



Beveled external corner



Trim line



Skirting board

P· SERIES

THE SAME COLOR WALL PANEL



Product Details

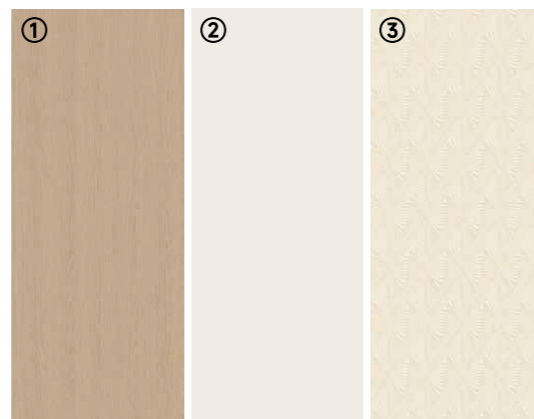
Wall panel process : 18cmY Yellow Oak

Recommended pairing : P·XBO Series

Model : 18cmWainscoting

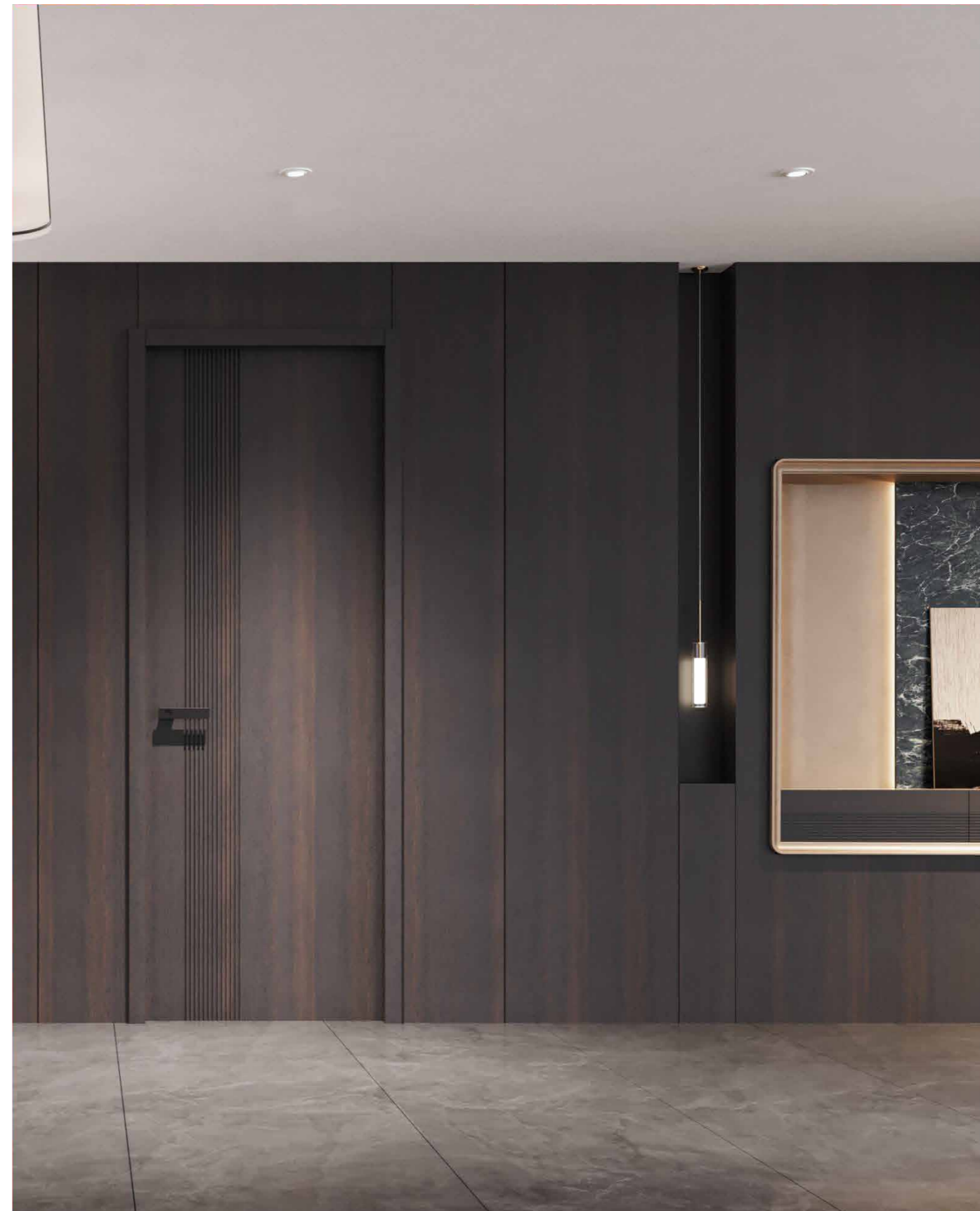
Color matching of wall panels :

- ① Y136
- ② K2306
- ③ Y205



P· SERIES

THE SAME COLOR WALL PANEL



■ Product Details

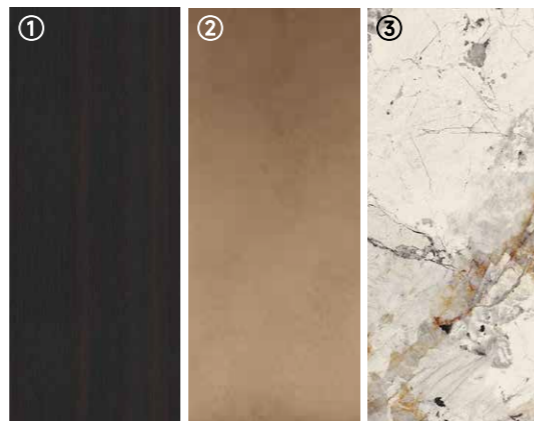
Wall panel process : 18mmY Smoked Oak

Recommended pairing : P·XJJ Series

Model : 18mmWainscoting

Color matching of wall panels :

- ① VS-22903
- ② L3801
- ③ Y302



P· SERIES

THE SAME COLOR WALL PANEL



■ Product Details

Wall panel process : 18mmL3177B Angora Gray+carving

Recommended pairing : P·XFS Series

Model : Painted carved wainscoting

Color matching of wall panels :

- ① L3177B
- ② Y133
- ③ Y302



P· SERIES

THE SAME COLOR WALL PANEL



Product Details

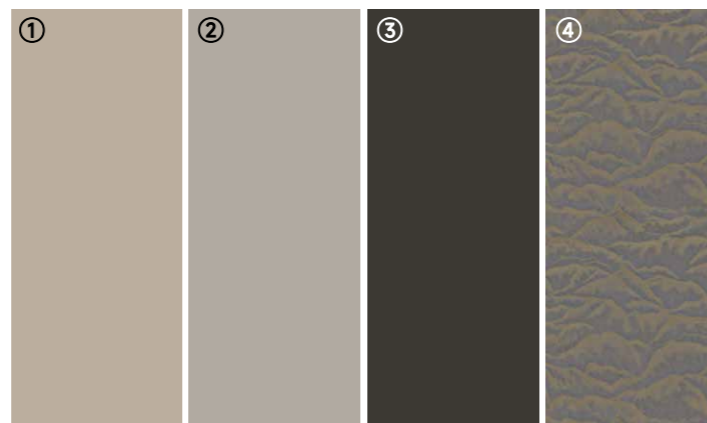
Wall panel process : 18mm Y Silk

Recommended pairing : P·XDF Series

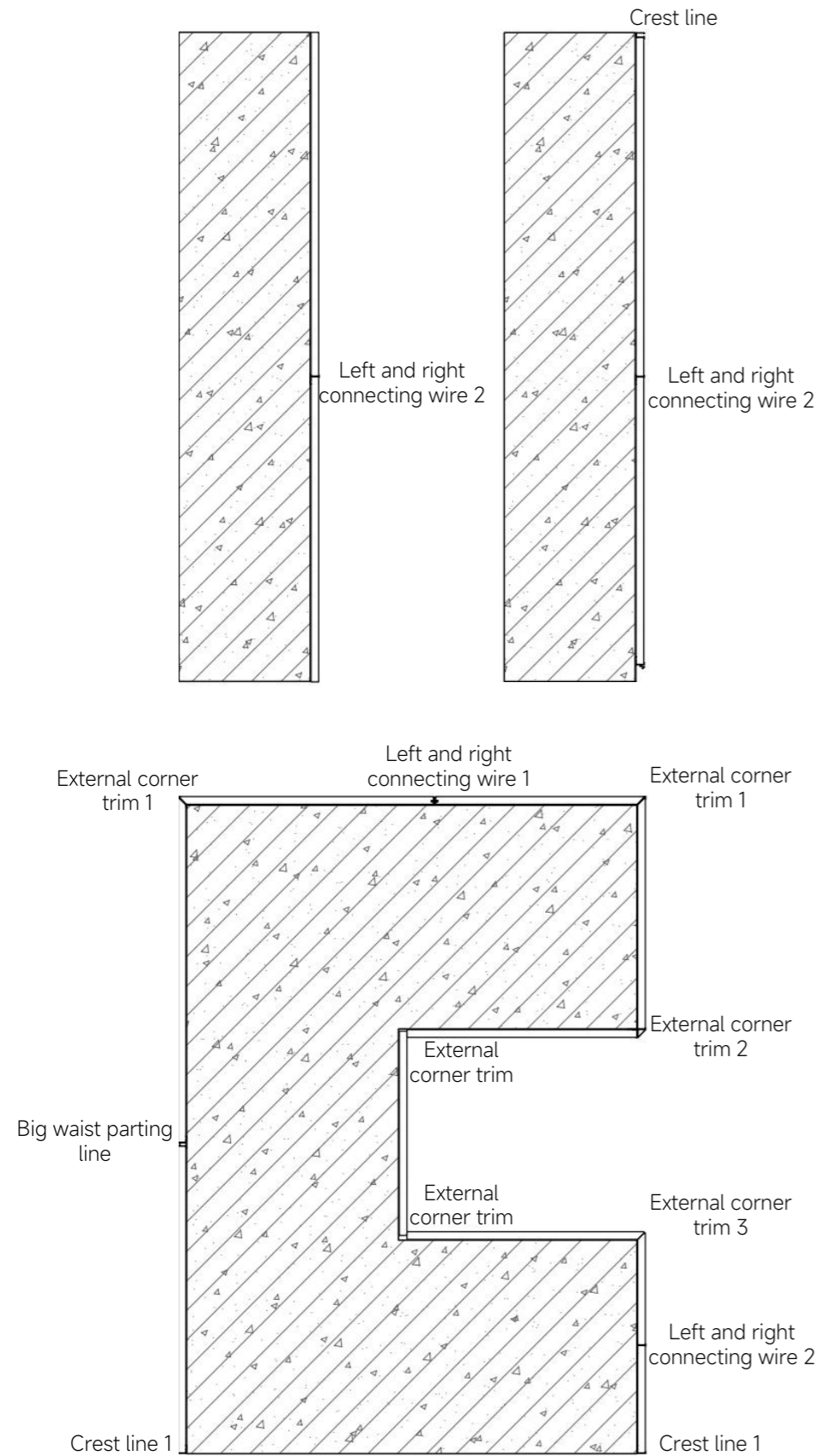
Model : 18mmWainscoting

Color matching of wall panels :

- ① Y135
- ② L3179B
- ③ L 3181B
- ④ Y203

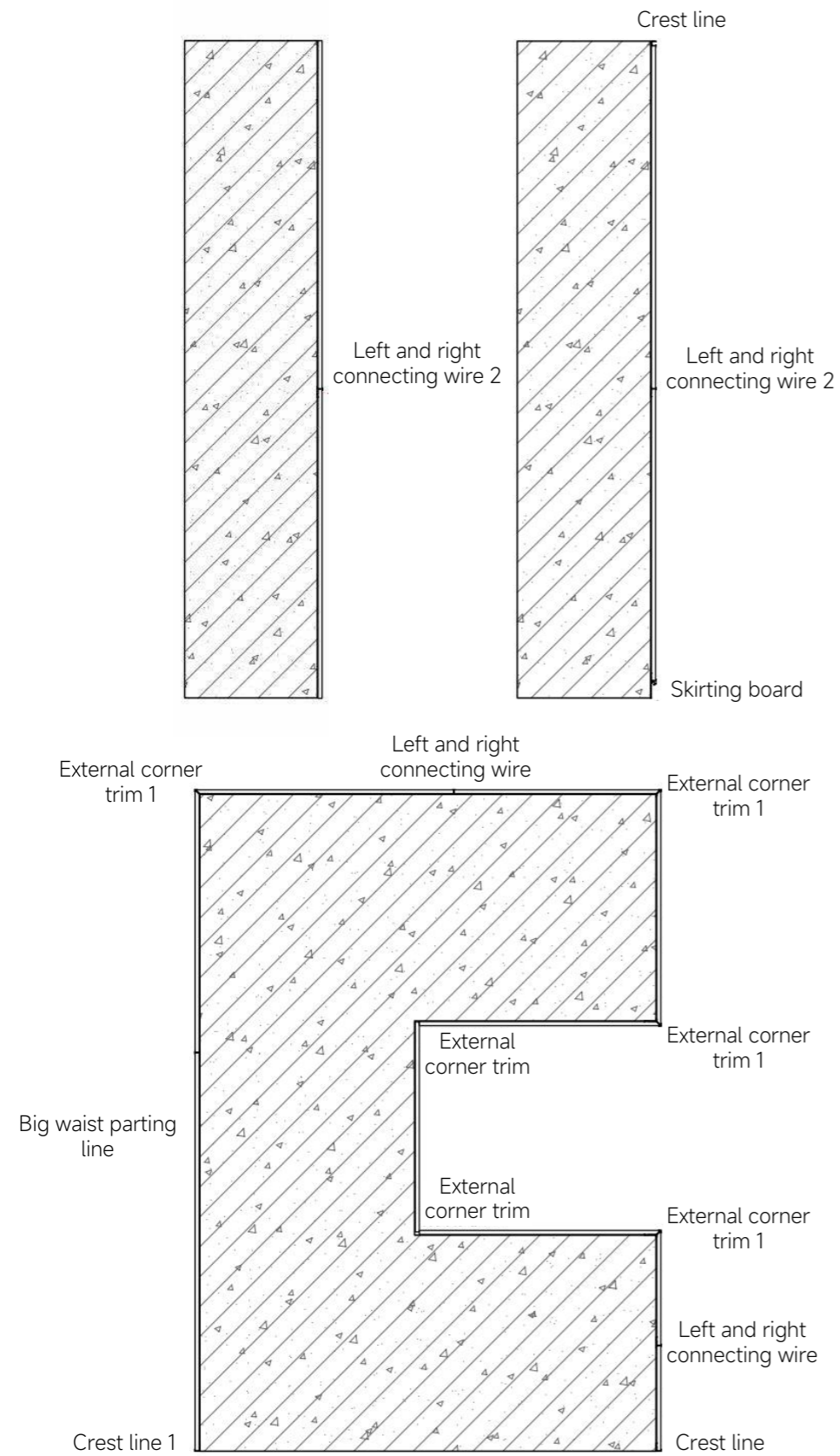


18MM WALL PANEL SYSTEM



Closure Name	Section No.	Section Syle	Rough sketch
External corner trim 1	LS2048H		
External corner trim 2	LS18010AH		
External corner trim 3	45 degree Angle of crabapple corner		
Left and right connecting wire 1	LS402H		
Left and right connecting wire 2	LS2045H		
Side closure1	LS2044H		
Big waist parting line	LS2046H		
Crest line	LS2050H		
Skirting board	LS2047H		

9MM WALL PANEL SYSTEM



Closure Name	Section No.	Section Syle	Rough sketch
External corner trim 1	LS2087H		
Left and right connecting wire	LS2084H		
Side closure1	LS2085H		
Crest line	LS2086H		
Skirting board	LS2088H		



YOUR ONE STOP
SOLUTION...